



BECHERS DRIVE
AINTREE RACECOURSE
BUSINESS PARK
AINTREE
LIVERPOOL
L9 5AY

RUBY

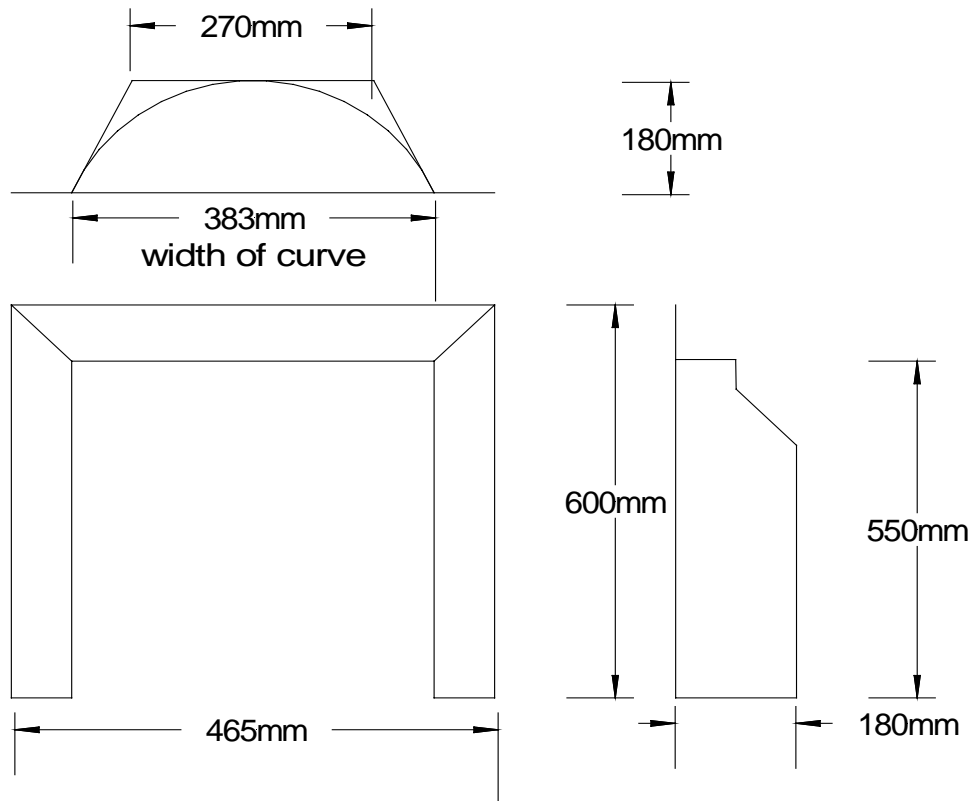
DECORATIVE FUEL EFFECT GAS FIRE

THIS APPLIANCE IS CAT I_{2H}
FOR USE WITH NATURAL GAS
ONLY

G20 AT 20mbar
IN G.B. AND I.E.

**INSTALLATION & SERVICING
BOOK**

SIZES INCLUDING STANDARD TRIM



SIZES INCLUDING TRIM RADIANT BOX

PLEASE READ THESE INSTRUCTIONS CAREFULLY BEFORE YOU START
INSTALLING THE APPLIANCE.
KEEP THIS BOOKLET HANDY FOR FUTURE REFERENCE

TECHNICAL DATA

GAS TYPE:	NATURAL GAS
GAS PRESSURE:	20mbar
CONNECTION	8mm TUBE
INJECTOR manual control:	CAT 82/420 BRAY
INJECTOR remote control:	CAT 82/400 BRAY
HEAT INPUT	6.5kW HIGH 4.1kW LOW

CAT 1_{2H} DATA BADGE ON FRONT BOTTOM SECTION OF APPLIANCE

IMPORTANT NOTES

THIS APPLIANCE IS FITTED WITH AN ATMOSPHERE SENSING DEVICE AND CAN ONLY BE FITTED IN CONJUNCTION WITH THE FOLLOWING FLUES.

CONVENTIONAL BRICK OR STONE CHIMNEY.

A PRE CAST FLUE CONFORMING TO BS 1289 PT 1

OR A METAL FLUE BOX CONFORMING TO BS715

A NON COMBUSTIBLE HEARTH MUST BE PROVIDED TO COMPLY WITH THE BUILDING REGULATIONS OR A SUITABLE PROPRIETARY FIRE SURROUND WITH 100 DEGREES C RATING.

THE CHIMNEY OR FLUE (UNLESS NEW) MUST BE SWEPT BEFORE INSTALLATION, IF IT HAS BEEN USED FOR SOLID FUEL

INSTALLER

THIS APPLIANCE MUST BE INSTALLED BY A COMPETENT PERSON

IE. A C.O.R.G.I. REGISTERED INSTALLER(IN GREAT BRITAIN) IN ACCORDANCE WITH THE

CURRENT EDITION OF THE GAS SAFETY (INSTALLATION AND USE) REGULATIONS OR THE RULES IN FORCE. FAILURE TO DO SO COULD LEAD TO PROSECUTION.

VENTILATION GREAT BRITAIN

NO SPECIAL VENTILATION BRICKS OR VENTS ARE NORMALLY REQUIRED INTO THE ROOM CONTAINING THE APPLIANCE, PROVIDED NORMAL ADVANTAGEOUS ROOM VENTILATION EXISTS, THE INSTALLER MUST SATISFY THIS POINT BY A MANDATORY SPILLAGE TEST.

IRELAND. PURPOSE PROVIDED VENTILATION MUST BE PROVIDED AND MUST HAVE A MINIMUM FREE AREA OF 100CM₂ IN ACCORDANCE WITH I.S.813 DOMESTIC GAS INSTALLATIONS ISSUED BY THE NATIONAL STANDARDS AUTHORITY OF IRELAND.

WARNING

THIS APPLIANCE HAS A NAKED FLAME, AS WITH ALL SUCH FIRES IT IS RECOMMENDED THAT A FIREGUARD SHOULD BE USED FOR THE PROTECTION OF CHILDREN, THE ELDERLY AND INFIRM. FIRE GUARDS SHOULD CONFORM TO BS8423 2002 (FIREGUARDS FOR FIRES AND HEATING APPLIANCES FOR DOMESTIC USE-SPECIFICATION)

INSTALLATION REQUIREMENTS PRE CAST FLUES

A PRECAST FLUE CONFORMING TO THE REQUIREMENTS OF BS 1289 PART 1.FOR DETAILS OF THE DIMENSIONS REQUIRED TO LOCATE POSITION OF THE APPLIANCE WITHIN THE OPENING/STARTER BLOCKS SEE FIG 1.

WITH A MINIMUM 3 METERS EFFECTIVE HEIGHT.

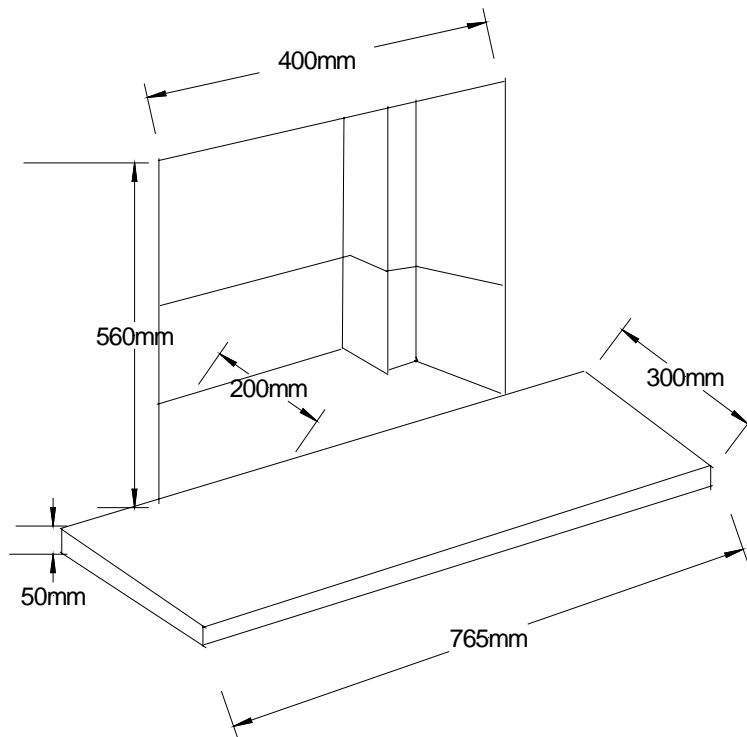


FIG 1

NOTE

AN INSPECTION SHOULD BE MADE TO ENSURE THAT THE INTERNAL WALLS OF THE FLUE ARE CLEAR OF MORTAR FANGS PRIOR TO INSTALLING THE APPLIANCE.

A 50mm SPACER CAN BE FITTED TO ALLOW MORE DEPTH IF REQUIRED USING THE FOLLOWING PROCEDURE.

MARK POSITION OF FLANGE HOLES, DRILL AND PLUG AND FIX SPACER USING FOAM SEAL SUPPLIED. THEN SCREW FIRE TO SPACER SEALING WITH FOAM SEAL SUPPLIED AND SCREWS SUPPLIED WITH SPACER.

CONVENTIONAL CHIMNEY

A CONVENTIONAL BRICK OR STONE CHIMNEY AS USED FOR SOLID FUEL APPLIANCE WITH A MINIMUM EFFECTIVE CROSS SECTIONAL DIMENSION OF 225*225mm, WITH A MINIMUM OF 3 METERS EFFECTIVE HEIGHT.

A LINED FLUE WITH A MINIMUM DIAMETER OF 125mm WITH THE FIREPLACE COMPONENTS CONFORMING TO BS 1251

A BUILDERS OPENING A MINIMUM OF 560mm HIGH AND 400mm WIDE WITH A MINIMUM DEPTH OF 230mm TO ALLOW SUFFICIENT VOLUME OF DEBRIS COLLECTION.

TO OBTAIN THIS DEPTH IT IS NECESSARY TO REMOVE THE CHAIRBRICK

ANY PERMANENT FLUE RESTRICTION OR VARIABLE DAMPER MUST BE REMOVED OR LOCKED FULLY OPEN.

THE CHIMNEY MUST BE SWEEPED PRIOR TO INSTALLATION IF NOT NEW.

THE CHAIRBRICK MUST BE REMOVED ON ALL INSTALLATIONS.

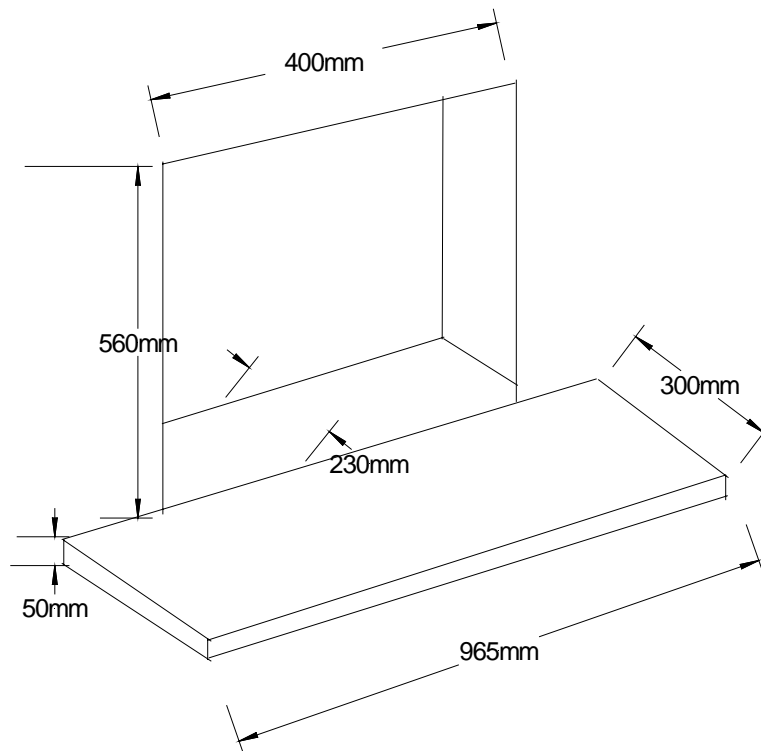


fig 2

THE RELEVANT BRITISH STANDARDS MUST BE FOLLOWED

BS 5871 :PART 3

BS 5440: PART 1 AND 2

BS 6891

BS 8303

BS 1251

AND I.S 813 FOR IRELAND

A BRICK CHAMBER TO THE SIZES IN FIG 2 IN AN EXISTING BRICK OR STONE CHIMNEY A 125mm MINIMUM DIAMETER FLUE LINER CONFORMING TO BS715 MAY BE USED, PROVIDING IT IS SEALED AT THE TOP AND BOTTOM OF THE EXISTING BRICK OR STONE CHIMNEY.

NOTE

ANY OF THE ABOVE FLUES MUST **NOT** BE RESTRICTED BY DAMPERS OR REGISTER PLATES, THE FLUE MUST SERVE ONLY ONE APPLIANCE AND NOT HAVE ANY BRANCHES OR TRAPS WHICH MAY IMPEDE THE NATURAL DRAUGHT .IF ANY TERMINAL IS FITTED IT MUST BE SUITABLE FOR THE PURPOSE.

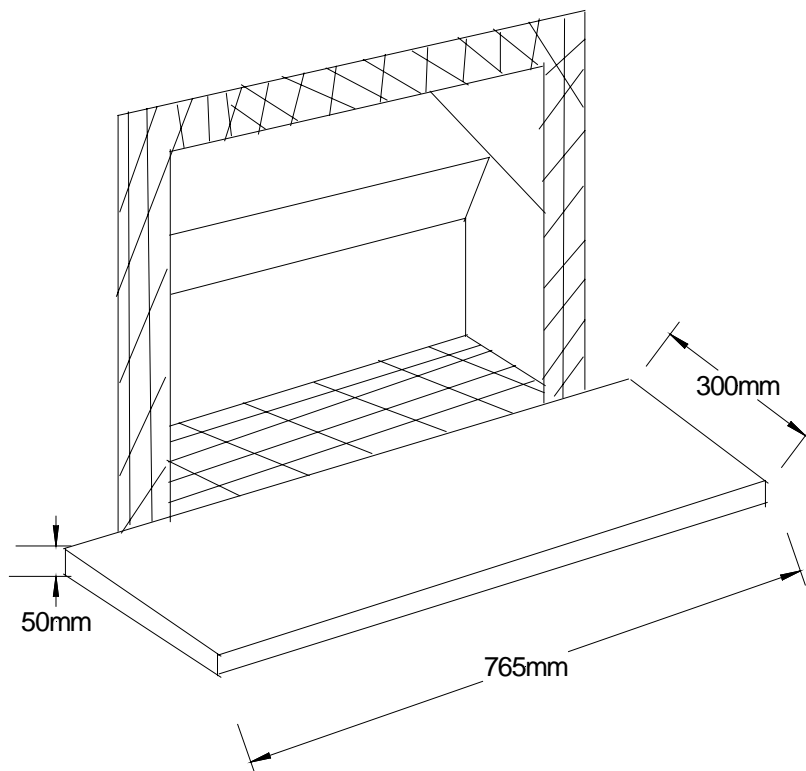


FIG 3

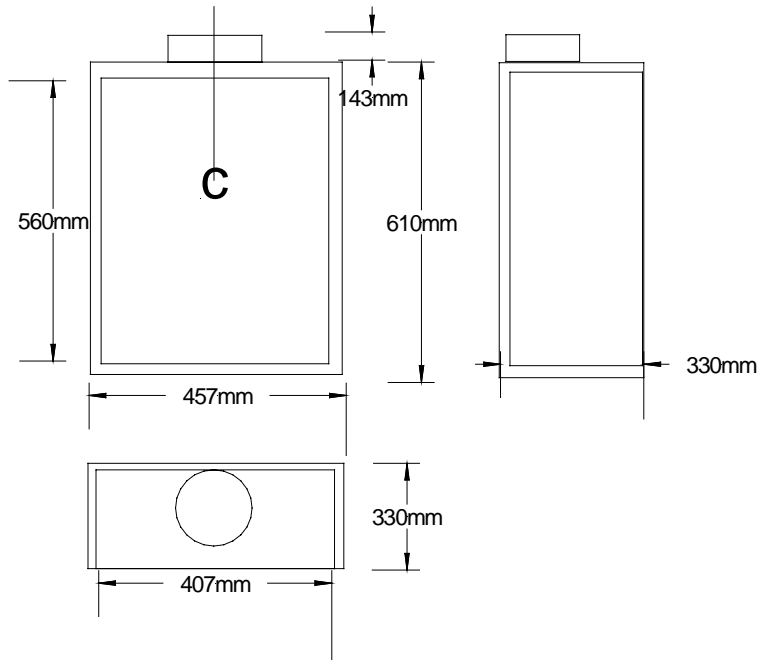
AS FOR FIG 2

THE FRONT FACE SEAL MUST BE FLAT TO ENSURE A GOOD SEAL IS FORMED BETWEEN THE REAR AND BASE OF THE APPLIANCE AND CHIMNEY TO AVOID ANY REDUCTION IN THE NATURAL DRAUGHT. **ALWAYS ENSURE THE HEARTH IS LEVELED OFF TO HELP ENSURE NO NATURAL DRAUGHT IS LOST BELOW BASE (SEE FIG 3)**

INSTALLATION REQUIREMENTS

5"(125mm) FLUE PIPE AND STARTER BOX

A DOUBLE WALLED SELKIRK RECESSED FLUE BOX BUILT TO THE REQUIRMENTS OF BS 715 WITH AN INSULATED FLUE HAVING A MINIMUM DIAMETER OF 125mm(5") AND A MINIMUM EFFECTIVE OVERALL HEIGHT OF 3 METRES (10FT)



RECESSED GAS FLUE BOX DIMENSIONS(NOT INCLUDING FIBREGLASS INSULATION)

NOTE

THE METAL FLUE BOX MUST BE INSULATED WITH FIBREGLASS OR EQUIVALENT TO A THICKNESS OF 25mm

NOTE

WHERE INSTALLATION IS FOR A METAL FLUEBOX.THE SURROUND MUST HAVE A TEMPERATURE RATING OF 150 DEGREES C

NOTE

IF A FLUE BOX IS TO BE USED WITH A EXISTING BRICK OR STONE CHIMNEY A 125mm MINIMUM DIAMETER FLUE LINER CONFORMING TO BS 715 CAN BE USED

NOTE

A BRICK CHAMBER TO THE SIZES IN FIG 2 .IN AN EXISTING BRICK OR STONE CHIMNEY A 125mm (5") MINIMUM DIAMETER FLUE LINER CONFORMING TO BS 715 MAY BE USED,PROVIDING THAT IT IS SEALED AT THE TOP AND BOTTOM OF EXISTING BRICK OR STONE CHIMNEY.

NOTE

ANY OF THE ABOVE FLUES MUST NOT BE RESTRICTED BY DAMPERS OR REGISTER PLATES.THE FLUEMUST SERVE ONLY ONE APPLIANCE AND NOT HAVE ANY BRANCHES OR TRAPS WHICH MAY IMPEDE THE NATURAL DRAUGHT .IF ANY TERMINAL IS FITTED IT MUST BE SUITABLE FOR THE PURPOSE

A NON COMBUSTIBLE HEARTH MUST BE PROVIDED BENEATH THE APPLIANCE WITHIN THE FIREPLACE OPENING.

A FIRE RESISTANT HEARTH MUST ALSO BE PROVIDED SYMMETRICALLY DISPOSED ABOUT THE FIREPLACE OPENING A MINIMUM THICKNESS OF 12mm WITH THE PERIMETER 50mm ABOVE THE FLOOR LEVEL

THE WIDTH MUST EXTEND A MINIMUM OF 150mm EITHER SIDE OF THE FIREPLACE OPENING AND A DEPTH OF 300mm FROM THE FUEL BED ANY COMBUSTIBLE MATERIAL MUST BE REMOVED ABOVE THE OPENING TO A HEIGHT OF 900 mm ABOVE THE HEARTH LEVEL.

PURPOSE BUILT SUPERIMPOSED FIRE RESISTANT HEARTHS AND BACK PANELS, SPECIFIED AS SUITABLE BY THE MANUFACTURERS MAY BE USED, OR A SUITABLE PROPRIETARY FIRE SURROUND WITH A 100 DEGREES C RATING.

CARE SHOULD BE TAKEN TO PREVENT ANY DAMAGE BEING CAUSED TO SURROUNDING SOFT FURNISHINGS OR DECORATION. MANY EMBOSSED VINYL WALL COVERINGS MAY BECOME DISCOLOURED IF PLACE TOO CLOSE TO THE APPLIANCE

CHECK FLUE

CHECK THAT THE CHIMNEY CONFORMS TO THE REQUIRED SPECIFICATIONS AS PREVIOUSLY STATED.

EXAMINE THE CONDITION AND CARRY OUT ANY REMEDIAL WORK IF THE FLUE HAS BEEN USED FOR SOLID FUEL IT MUST BE SWEEPED AND A SMOKE TEST CARRIED OUT TO CHECK THAT SATISFACTORY SMOKE CLEARANCE HAS BEEN ESTABLISHED.

IF ALL THE SMOKE IS NOT DRAWN INTO THE FLUE , PRE HEAT THE FLUE WITH A BLOW TORCH OR SIMILAR AND RE CHECK, IF THERE IS ANY UNCERTAINTY EXAMINE FOR THE CAUSE AND IF NECESSARY SEEK EXPERT ADVICE.

GAS SUPPLY

IT IS RECOMMENDED A CONCEALED CONNECTION IS MADE USING SEMI RIGID TUBING ON THE LEFT SIDE OF THE APPLIANCE TAKING INTO ACCOUNT THE REQUIREMENTS OF BS 6891 1988 DEALING WITH ENCLOSED PIPES.

AN ISOLATING VALVE IS BUILT IN TO THE APPLIANCE AS PART OF THE PRESSURE TEST POINT ELBOW.

SECURE FIRE TO FIREPLACE

MARK POSITION OF FLANGE HOLES, DRILL AND PLUG AND FIX FIRE TO FIREPLACE ENSURING A GOOD SEAL USING FOAM SEAL SUPPLIED.

CHECKING GAS PRESSURE AND SOUNDNESS

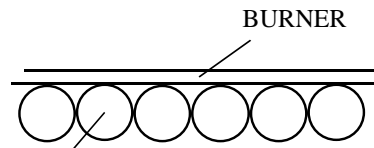
REMOVE THE PRESSURE TEST POINT SCREW FROM THE INLET ELBOW AND
CONNECT PRESSURE GAUGE.
TURN ON GAS TO APPLIANCE.
ROTATE THE CONTROL TO THE IGNITION POSITION AND PUSH IN TO ALLOW THE
AIR IN THE PIPEWORK TO BE PURGED.
PUSH IN PIEZO IGNITION SWITCH
CHECK THAT THE ELECTRODE IS SPARKING.
CONTINUE SPARKING UNTIL PILOT IGNITION IS ESTABLISHED.
TURN THE GAS CONTROL KNOB ON TO THE HIGH POSITION AND ALLOW TO RUN
FOR FIVE MINUTES.
CHECK THE INLET PRESSURE IS 20 MBAR. +/- 1mbar
CHECK FOR GAS SOUNDNESS.
TURN OFF GAS SUPPLY, DISCONNECT PRESSURE GAUGE AND REPLACE PRESSURE
TEST POINT SCREW.

FUEL BED LAYOUT

PERIODICALLY SMALL DEPOSITS OF SOOT MAY GATHER ON
THE FUEL BED AND BURNER, THIS MUST BE REMOVED BY
REMOVING FUEL AND BRUSHING ANY DEPOSITS WITH A
SOFT BRUSH AND VACUUMING THE BURNER, THEN REPLACE
FUEL USING THE FOLLOWING PROCEDURE.

RUBY RANDOM PEBBLE LAYOUT

SIX RANDOM PEBBLES FIT
 FLUSH
 ON TOP OF FRONT FIBRE,
 PUSHED AS FAR TOWARDS THE
 BACK FIBRE BUT NOT OVER THE
 BURNER.
 IF THE FLAMES WAS TURNED ON
 NOW THE FRONT PEBBLES
 WOULD NOT IMPINGE THE
 FLAME



RANDOM PEBBLE PIECES



TWO RANDOM FUEL PIECES
 SIT ON TWO SIDES AS SHOWN

5 PIECES SIT BETWEEN THE TWO ON THE
 SIDES AS SHOWN



FINAL 3 SIT CENTRAL AS SHOWN



4 RANDOM PIECES SIT AS SHOWN



TEST FOR SPILLAGE

CHECK FOR SATISFACTORY CLEARANCE OF COMBUSTION PRODUCTS
CLOSE ALL DOORS AND WINDOWS IN THE ROOMS CONTAINING THE
FIRE.

TURN ON GAS FIRE AND SET THE CONTROL TO HIGH
LEAVE THE FIRE BURNING FOR FIVE MINUTES AND INSERT A LIGHTED
SMOKE MATCH ON A VERTICAL PLANE

50 mm DIRECTLY UNDER FRONT EDGE OF CANOPY AND 50mm FROM
EITHER SIDE OF THE OPENING

ALL SMOKE MUST BE DRAWN INTO THE FLUE

IF SPILLAGE OCCURS ALLOW A FURTHER TEN MINUTES

SHOULD SPILLAGE STILL OCCUR TURN OFF THE FIRE AND SEEK
EXPERT ADVICE

IF AN EXTRACTOR FAN IS SITUATED IN THE ROOM , THIS TEST SHOULD
BE REPEATED WITH THE FAN RUNNING

IF THERE IS A ROOM WITH AN EXTRACTOR FAN, THE TEST SHOULD BE
REPEATED WITH ALL THE DOORS TO THAT ROOM OPENED AND THE
EXTRACTOR FAN RUNNING

FITTING TRIMS

FIT THE TRIM WITH FOUR MAGNETS PLACED ON THE VERTICAL SIDE FLANGES
OF THE FIREBOX (ONE AT THE TOP AND ONE AT THE BOTTOM)

OFFER THE TRIM UP AND PUSH INTO POSITION

PLACE FRET CENTRALLY IN FRONT TO COVER THE CONTROLS

INSTRUCT USER

DEMONSTRATE THE LIGHTING AND EXTINGUISHING PROCEDURES TO THE USER
AND REMOVAL AND REFITTING OF THE TRIM FOR CLEANING.

THE APPLIANCE SHOULD BE OPERATED WITH THE GAS CONTROL NOT TURNED ON
MORE THAN LOW FOR THE FIRST FIVE HOURS OF USE TO ALLOW THE FIBRE
FUEL TO CURE SLOWLY.

THE CURING EFFECT OF HEATING THE FUEL AND OTHER CERAMICS COMPONENTS
WILL CAUSE AN INITIAL ODOR.

THE APPLIANCE SHOULD BE SERVICED ANNUALLY BY A COMPETENT PERSON IN
ACCORDANCE WITH THESE INSTRUCTIONS AND THE APPLIANCE CHECKED FOR
SPILLAGE IN ACCORDANCE WITH THE METHOD DETAILED IN THESE
INSTRUCTIONS

HAND THESE INSTRUCTIONS TO THE USER.

SERVICING NOTES

GENERAL NOTES.

SERVICING SHOULD BE CARRIED OUT ANNUALLY BY A COMPETENT PERSON SUCH AS A CORGI REGISTERED PERSON IN ACCORDANCE WITH THE RELEVANT REGULATIONS, TO ENSURE THE SAFE AND CORRECT OPERATION OF THE APPLIANCE

BEFORE COMMENCING ANY SERVICE OR REPLACEMENT OF PARTS TURN OFF GAS SUPPLY TO FIRE

AFTER SERVICING CHECK FOR GAS SOUNDNESS

AT LEAST ONCE A YEAR CHECK FOR DEBRIS

IF SOOT HAS ACCUMULATED CHECK TO ESTABLISH CAUSE AND RECTIFY IF NECESSARY CLEAN FLUE OR CHIMNEY ACCORDINGLY

EXAMINE THE FUEL FOR SIGNS OF CRACKING AND REPLACE IF NECESSARY. SEE FUEL LAYOUT PROCEDURE BEFORE ATTEMPTING TO REPLACE FUEL WHICH SHOULD ONLY BE REPLACED AS A COMPLETE SET WITH NO EXTRA FUEL ADDED.

1 REMOVAL OF FUEL PIECES

REMOVE LOOSE FUEL PIECES

REMOVE FRONT FIBRE BASE

REMOVE MAIN FIBRE BASE

2 REPLACEMENT OF GAS CONTROL

REMOVE FUEL SET AS 1

DISCONNECT FIRE AT INLET ELBOW

REMOVE FIRETRAY BY UNSCREWING TWO SCREWS AT FRONT BOTTOM SECTION OF FIRE TRAY

REMOVE CONTROL KNOB, DISCONNECT GAS CONNECTIONS TO VALVE INCLUDING PILOT CONNECTION AND THERMOCOUPLE CONNECTION

REMOVE LOCKNUT HOLDING GAS CONTROL TO FRONT BOTTOM SECTION .

RE ASSEMBLE IN REVERSE ORDER

TURN ON GAS SUPPLY. CHECK FOR SOUNDNESS AND RE COMMISSION APPLIANCE

3 REPLACEMENT OF INJECTOR

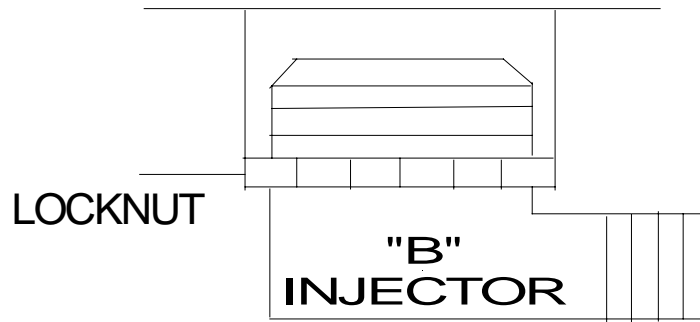
REMOVE FUEL PIECES SEE 1

REPEAT 2 REMOVE GAS CONTROL

DISCONNECT GAS CONNECTION TO INJECTOR

UNSCREW INJECTOR "B" WHILST AT THE SAME TIME HOLDING LOCKNUT WITH A SPANNER AND CLEAN OR REPLACE.

SEE DIAGRAM BELOW.



RE ASSEMBLE IN REVERSE ORDER
 TURN ON GAS SUPPLY. CHECK FOR SOUNDNESS AND RECOMMISSION
 THE FIRE.

REPLACEMENT OXY PILOT ASSEMBLY

DISCONNECT FIRE AT INLET ELBOW
 REMOVE FIRETRAY
 DISCONNECT THERMOCOUPLE AT GAS VALVE
 DISCONNECT GAS CONNECTION FROM PILOT ASSEMBLY
 REMOVE IGNITOR LEAD FROM PILOT ASSEMBLY
 UNDO SCREWS SECURING OXY PILOT TO FIRETRAY
 RE-ASSEMBLE IN REVERSE ORDER
 TURN ON GAS SUPPLY, CHECK FOR SOUNDNESS AND RE-COMMISSION
 APPLIANCE

CLEANING

BEFORE CLEANING ANY PART OF THE FIRE ,ENSURE THAT THE GAS IS
 TURNED OFF AND FIRE IS COOL.

BLACK PAINT

USE ONLY CLEAN DAMP CLOTH ,DO NOT USE ANY CLEANING AGENTS

BRASS TRIM/CHROME

USE BRASSO,OR CHROME CLEANER ENSURING YOU REMOVE THE
 BRASS TRIM FROM THE APPLIANCE BEFORE CLEANING

IMPORTANT

THE PAINT AND BRASS FINISH ARE DURABLE BUT WILL BE DAMAGED
 IF PLASTER,CEMENT,OR WALLPAPER PASTE COMES IN CONTACT WITH
 IT

COALS AND CERAMICS

IF FOR ANY REASON IT IS NECCESARY TO REMOVE CERAMIC
 PARTS,THEN BEFORE REPLACEMENT THE BURNER SHOULD BE
 CHECKED THAT NO PARTICLES HAVE DEPOSITED ON THE BURNER
 AND IF NECCESARY VACUUM THEM CAREFULLY,THEN REFER TO
 INSTRUCTIONS FOR REPLACING CERAMICS.
 CERAMICS SHOULD BE CLEANED BY SHAKING ANY DEBRIS
 NO BRUSHING OR VACUUMING SHOULD BE PERFORMED .

INSTALLER SPARE PARTS

FUEL BED	RUBY001	MAIN MATRIX	RUBY002
FRONT FIBRE	RUBY 003	INSTUCTIONS	RUBY 004
TRIM	RUBY 005	ODS COMPLETE	RUBY 006
GAS VALVE	RUB007		
INJECTOR REMOTE CONTROL	RUBY007	CAT 82/400	
INJECTOR MANUAL CONTROL	RUBY008	CAT 82/420	



BECHERS DRIVE
AINTREE RACECOURSE
BUSINESS PARK
AINTREE
LIVERPOOL
L9 5AY

RUBY

DECORATIVE FUEL EFFECT GAS FIRE

THIS APPLIANCE IS CAT I_{2H}
FOR USE WITH NATURAL GAS
ONLY

G20 AT 20mbar
IN G.B. AND I.E.

USERS INSTUCTIONS

USERS INSTRUCTIONS FOR RUBY GAS APPLIANCE

YOUR RUBY GAS APPLIANCE IS A DECORATIVE LIVE FUEL EFFECT GAS FIRE ,DUE TO ITS NEWNESS THE FIRE MAY GIVE OFF SLIGHT SMELL FOR A SHORT PERIOD AFTER INSTALLATION .THIS IS QUITE NORMAL AND WILL DISAPPEAR AFTER A FEW HOURS OF OPERATION.

THE APPLIANCE TO WHICH THESE INSTRUCTIONS APPLY MUST BE INSTALLED BY A COMPETENT PERSON(EG. A C.O.R.G.I MEMBER IN ACCORDANCE WITH THE CURRENT EDITION OF THE GAS SAFETY INSTALLATIONS AND USE REGULATIONS OR THE RULES IN FORCE)APPROVED BY THE HEALTH AND SAFETY EXECUTIVE AND MUST BE IN ACCORDANCE WITH THE INSTALLATION AND SERVICING INSTUCTIONS SUPPLIED.

SERVICING SHOULD BE CARRIED OUT REGULARLY BY A COMPETENT PERSON (EG A C.O.R.G.I MEMBER)IN ACCORDANCE WITH THE CURRENT EDITION OF THE GAS SAFETY (INSTALLATION AND USE) REGULATIONS OR THE RULES IN FORCE.TO ENSURE THE CORRECT AND SAFE OPERATION OF THE APPLIANCE .DEBRIS SHOULD ALSO BE REMOVED FROM BEHIND THE APPLIANCE AT REGULAR INTERVALS.

BEFORE INSTALLATION OF THE APPLIANCE THE CHIMNEY MUST BE SWEPT AND THEN INSPECTED REGURLARLY TO ENSURE THAT IT REMAINS FREE OF OBSTRUCTION.

A FIRE GUARD COMPLYING TO BS8423 ,MUST BE FITTED IF THE ROOM WILL BE OCCUPIED BY YOUNG CHILDREN THE ELDERLY ,OR INFIRM PEOPLE. ON NO ACCOUNT MUST ANY RUBBISH BE THROWN ON TO THE FIRE OR THE LAYOUT OF THE FIREBED DISTURBED.

OPERATING INSTRUCTIONS.

THE APPLIANCE DATA BADGE IS POSITIONED ON THE FRONT BOTTOM SECTION OF THE APPLIANCE AND CARRIES THE CONTROL KNOB POSITIONS.THE FULL LIGHTING PROCEDURE IS AS FOLLOWS.

- 1.PUSH CONTROL KNOB IN AS FAR AS POSSIBLE ON GAS CONTROL
- 2.TURN KNOB ANTICLOCKWISE TO IGNITION POSITION STILL KEEPING KNOB IN AS FAR AS POSSIBLE.
- 3.THE IGNITION BUTTON WILL IGNITE THE PILOT WITH THIS OPERATION **KEEP THE KNOB PRESSED IN FOR 15 SECONDS**.IF THE PILOT FAILS TO LIGHT TURN THE CONTROL KNOB CLOCKWISE TO THE OFF POSITION, WAIT 3 MINUTES AND REPEAT THE PROCEDURE
- 4.WHEN THE PILOT FLAME IS ALIGHT THE CONTROL KNOB SHOULD BE ALLOWED TO SPRING OUT SLIGHTLY.TURN THE KNOB FULLY ANTICLOCKWISE TO THE HIGH POSITION.THE PILOT FLAME WILL THEN IGNITE THE MAIN BURNER.THE PILOT FLAME CAN BE VIEWED TO THE RIGHT OF THE FIRE JUST BEHIND THE FRONT LOG SET
- 5.THE APPLIANCE CAN BE ADJUSTED BETWEEN HIGH AND LOW BY MOVING THE CONTROL KNOB TO SUIT,THE KNOB WILL NEED TO BE DEPRESSED SLIGHTLY TO MOVE FROM LOW HIGH AND IGNITION.
- 6.TO TURN THE FIRE OFF,DEPRESS THE KNOB SLIGHTLY AND TURN IT TO PILOT POSITION.
- 7.TO COMPLETELY EXTINGUISH THE FIRE DEPRESS THE KNOB SLIGHTLY AND TURN TO OFF POSITION.
- 8.SHOULD THE SPARK IGNITION FAIL TO OPERATE.TURN THE CONTROL KNOB TO THE OFF POSITION AND WAIT 3 MINUTES.TURN THE KNOB TO THE IGNITION POSITION AND THEN LIGHT THE PILOT WITH A TAPER."LIGHTING THE PILOT

WITH A TAPER IS AN EMERGENCY MEASURE ONLY AND THE APPLIANCE SHOULD BE SERVICED AS SOON AS POSSIBLE".AND THEN PROCEED AS STATED IN PARAGRAPHS 2/7.

IMPORTANT .THIS APPLIANCE IS FITTED WITH AN OXYGEN DEPLETION SENSOR INCORPORATED INTO THE PILOT BODY.SHOULD THE FIRE REEATEDLY EXTINGUISH ITSELF THEN SPECIALIST ADVISE SHOULD BE SOUGHT,AS THIS MAY INDICATE SPILLAGE INTO THE ROOM OF COMBUSTION PRODUCTS.

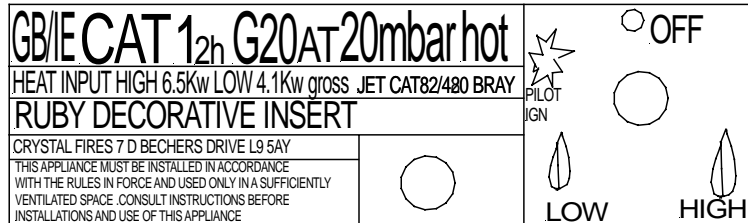


FIG 1

CLEANING

BEFORE CLEANING ANY PART OF THE FIRE ,ENSURE THAT THE GAS IS TURNED OFF AND FIRE IS COOL.

BLACK PAINT.

USE ONLY CLEAN DAMP CLOTH ,DO NOT USE ANY CLEANING AGENTS

BRASS TRIM

USE BRASSO,ENSURING YOU REMOVE THE BRASS TRIM FROM THE APPLIANCE BEFORE CLEANING

IMPORTANT

THE PAINT AND BRASS FINISH ARE DURABLE BUT WILL BE DAMAGED IF PLASTER,CEMENT,OR WALLPAPER PASTE COMES IN CONTACT WITH IT

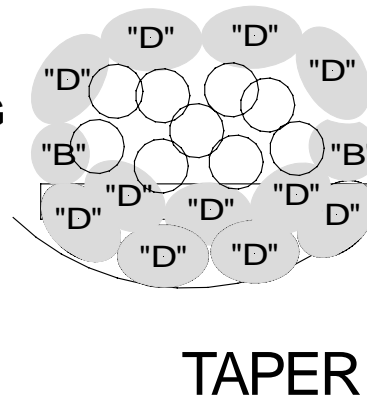
COALS AND CERAMICS

IF FOR ANY REASON IT IS NECCESARY TO REMOVE CERAMIC PARTS,THEN BEFORE REPLACEMENT THE BURNER SHOULD BE CHECKED THAT NO PARTICLES HAVE DEPOSITED ON THE BURNER AND IF NECCESARY VACUUM THEM CAREFULLY,THEN REFER TO INSTRUCTIONS FOR REPLACING CERAMICS.

CERAMICS SHOULD BE CLEANED WITH A SOFT BRUSH

RUBY GAS FIRE LIGHTING WITH TAPER

TO LIGHT WITH TAPER, PUSH
LIGHTED TAPER AS SHOWN
WHILST FOLLOWING THE OPERATING
INSTRUCTIONS

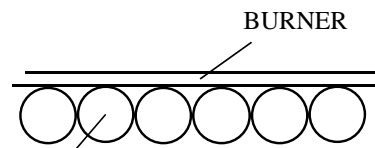


FUEL BED LAYOUT

PERIODICALLY SMALL DEPOSITS OF SOOT MAY GATHER ON THE FUEL BED AND BURNER, THIS MUST BE REMOVED BY REMOVING FUEL AND BRUSHING ANY DEPOSITS WITH A SOFT BRUSH AND VACUUMING THE BURNER, THEN REPLACE FUEL USING THE FOLLOWING PROCEDURE.

RUBY RANDOM PEBBLE LAYOUT

SIX RANDOM PEBBLES FIT FLUSH ON TOP OF FRONT FIBRE, PUSHED AS FAR TOWARDS THE BACK FIBRE BUT NOT OVER THE BURNER. IF THE FLAMES WAS TURNED ON NOW THE FRONT PEBBLES WOULD NOT IMPINGE THE FLAME



RANDOM PEBBLE PIECES



TWO RANDOM FUEL PIECES SIT ON TWO SIDES AS SHOWN

5 PIECES SIT BETWEEN THE TWO ON THE SIDES AS SHOWN



FINAL 3 SIT CENTRAL AS SHOWN



4 RANDOM PIECES SIT AS SHOWN



CUSTOMER SPARE PARTS

FUEL BED	RUBY001	MAIN MATRIX	RUBY002
FRONT FIBRE	RUBY 003	INSTUCTIONS	RUBY 004
BRASS TRIM	RUBY 005		