



1 VALENTINES BUILDINGS

Bechers drive

Aintree racecourse Business Park

L9 5ay

# **CONNELLY CURVE**

**GAS APPLIANCE**

**THE CONNELLY COLLECTON**

INSET CONVENTIONAL FLUED GAS FIRE

**INSTALLATION & USERS INSTRUCTIONS**

FOR USE WITH NATURAL GAS

CATEGORY I<sub>2H</sub>

G20 @ 20 mbar

For use in GB and IE



THESE INSTRUCTIONS MUST BE LEFT WITH THE USER FOR FUTURE REFERENCE

# THE CONNELLY CURVE GAS APPLIANCE

## CONTENTS

SECTION	INFORMATION & REQUIREMENTS	PAGE
1.0	IMPORTANT NOTES	3
2.0	INSTALLATION REQUIREMENTS	4
3.0	APPLIANCE INFORMATION	6
4.0	FLUES AND BUILDERS OPENING REQUIREMENTS	7
5.0	FIREPLACE OPENING SIZES AND CATCHMENT SPACE	8
6.0	INSTALLING THE CONVECTOR BOX	9
7.0	CONNECTING THE GAS AND TESTING	11
8.0	INSTALLING THE EMBERGLOW	13
9.0	LIGHTING THE APPLIANCE (USERS INSTRUCTIONS)	15
10.0	INSTRUCT THE USER	24
11.0	MAINTENANCE	24
12.0	SERVICING	25

## 1: IMPORTANT NOTES

1:1

**This fire should be installed and serviced every 12 months in accordance with current gas safety (Installation and uses) regulations by a competent person who is a member of a recognised gas installer's Organisation (e.g. Gas safe) and in accordance with the installation instructions.**

1:2

**The flue should be inspected before your appliance is installed and checked annually to ensure continuous Clearance of combustion products and safe operation.**

**The chimney must be swept before installation.**

1:3

**UNDER NO CIRCUMSTANCES must the fire be used if the glass door panel is broken cracked or Damaged**

1:4

**IMPORTANT.**

**The glass panel door and other outer parts, (e.g. outer frame and door) will become hot in use; clothes Etc. should not be wrapped over or near the fire and we recommend that a 'fire guard conforming to BS 8423 should be used for the protection of young children the elderly the infirm and pets'.**

1:5

**DO NOT burn paper or rubbish in the fire.**

1:6

**It is important for the safe operation and to maintain efficiency that the fire is not operated with damaged or Broken fuel effect pieces or ceramics.**

**UNDER NO CIRCUMSTANCES should extra fuel effect pieces be used.**

1:7

**When the fire is first used it may emit a slight odour or smoke, this is due to the newness and will Disappear. DO NOT WASH OR VACUUM the Fuel Effect ceramic pieces.**

1:8

**The fire MUST be installed into a Builders Opening in line with the Installation Instructions.**

**No combustible material should be placed within 150mm of the appliance**

**Any combustible material above the opening should be removed up to a height of**

**300 mm. any shelf above the fire should not project more than 150mm forward.**

**For deeper shelves allow a 15mm increase in height for every 25mm in depth.**

1:9

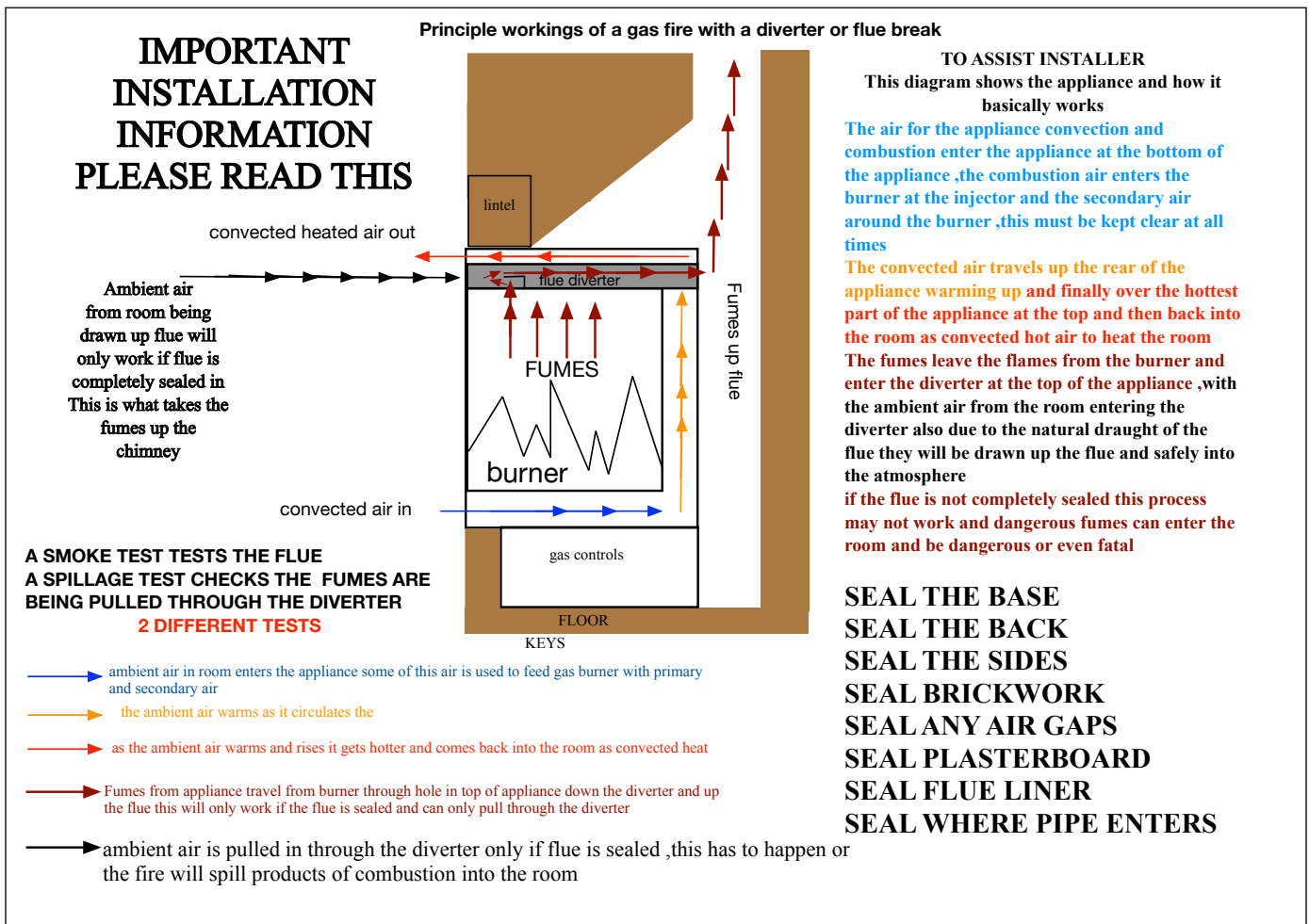
**These instructions are intended to assist you in the correct operation of your appliance and Should be kept safe for future reference**

The Benchmark Scheme

Benchmark places responsibilities on both manufacturers and installers. The purpose is to ensure that customers are provided with the correct equipment for their needs, that it is installed, commissioned and serviced in accordance with the manufacturer's instructions by competent persons and that it meets the requirements of the appropriate Building Regulations. The Benchmark Checklist can be used to demonstrate compliance with Building Regulations and should be provided to the customer for future reference.

Installers are required to carry out installation, commissioning and servicing work in accordance with the Benchmark Code of Practice which is available from the Heating and Hotwater Industry Council who manage and promote the Scheme. Visit [www.centralheating.co.uk](http://www.centralheating.co.uk) for more information.

## 2: INSTALLATION REQUIREMENTS



THE ABOVE DIAGRAM SHOWS THE WAY THE CONNELLY CURVE WORKS, FOLLOW THIS CAREFULLY THE FIRE MUST BE SEALED IN AIRTIGHT FOR THE SAFE OPERATION AND USE OF THIS APPLIANCE  
THE ONLY PLACE THE FLUE SHOULD PULL IS THROUGH THE DIVERTER

**2:1**

In your own interest and that of safety, it is law, that a competent person who is a member of a recognised gas installation organisation must install all gas appliances (**E.g.** Gas safe) In accordance with Current Gas Safety (**INSTALLATION AND USE**) Regulations.

**2:2**

Before installation, ensure that the local distribution conditions (identification of the gas and pressure) and the adjustment of the appliance are compatible.

The installation must be in accordance with these installation instructions and all relevant parts of the Local and National Building Regulations, the Building Standards (Scotland) Regulations and the relevant recommendations of current editions of the following British Standards: -

BS	BS	BS	BS	BS
5871	8303	5440 PART 1	5440 PART 2	6891

**2:3**

**IMPORTANT: This appliance is fitted with a spillage monitoring system, (ODS) and must not be adjusted, bypassed or Put out of operation, by the user or installer. Any parts of this system should only be exchanged for genuine crystal Manufacture parts.**

**This fire must not be installed in a room that contains a bath or shower.**

**This fire cannot be installed onto a combustible wall. All combustible materials must be removed from the area shown in section 11-appliance location**

**2:4**

No combustible materials must be present in the builders opening.  
These Instructions must be left with the User.

**2:5**

**VENTILATION: GB**

For installation in Great Britain additional ventilation is not normally required unless indicated as being required by the 'Spillage Test'

**2:6**

**VENTILATION: IE**

For installation in Southern Ireland ventilation must be in accordance with I.S813 Domestic Gas Installations.

**2:7**

**FLUE AND CHIMNEY SUITABILITY**

This appliance is designed for use with conventional brick built or lined chimneys and fabricated flues and metal flue boxes conforming to BS715 / BS EN 1856-2 .all flues must conform to the following minimum dimensions

**2:8**

**Minimum diameter circular flues 125 mm**

**Minimum effective height of all class 1 (175mm) flues 3 metres**

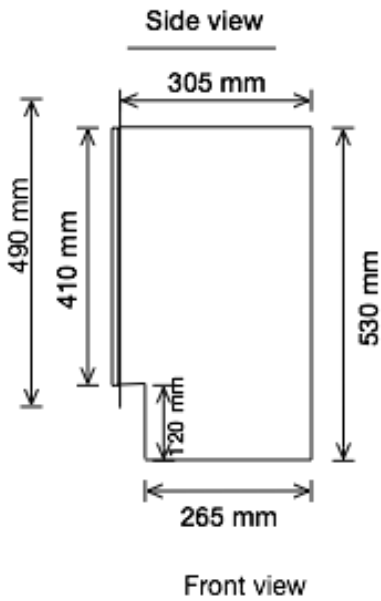
**Minimum effective height of all class 2 (125mm) flues 4 metres**

**2:9**

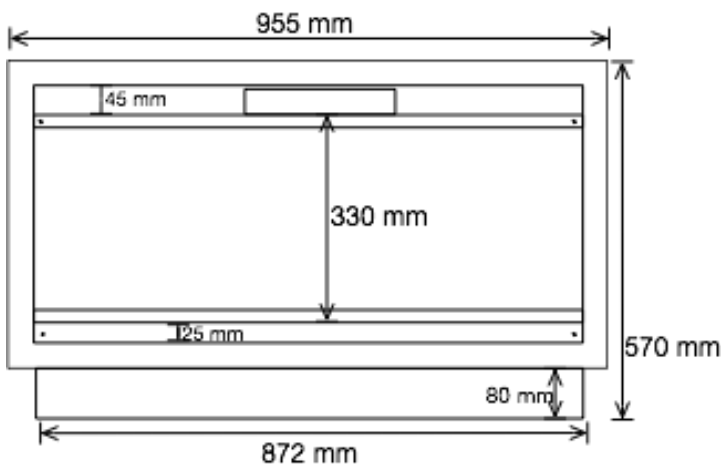
**ENSURE THAT IF INSTALLING THIS PRODUCT INTO A BRICK BUILT CHIMNEY, THE CHIMNEY HAS BEEN FULLY SWEEPED PRIOR TO PROCEEDING WITH THE INSTALLATION**

### 3: APPLIANCE INFORMATION

CONNELLY CURVE	
FOR USE WITH NATURAL GAS	G20
INJECTOR SIZE	500
HEAT INPUT HIGH	6.3kW
HEAT INPUT LOW	4.1kW
PRESSURE	20 +/- 1mbar
IGNITION SEQUENCE	Automatic
SPARK GAP	4mm
WEIGHT FULLY PACKED	100 KG
GAS SUPPLY PIPE SIZE	8mm



THE CONNELLY CURVE HAS A 25 MM AIR INLET ON THE FRONT OF THE APPLIANCE BENEATH THE GLASS FRAME  
**UNDER NO CIRCUMSTANCES SHOULD THIS EVER BE BLOCKED OFF OR COVERED**



#### 4.1

Prior to creating the builders opening the flue must be checked.

No restrictor plate or flue damper is permitted.

The flue must be swept prior to installation.

The flue must be free of any obstructions.

The flue must be checked to ensure it **only** serves the fireplace opening to be used for the fire.

The flue must have a positive up-draught and checked as follows before the builders-opening is constructed

Any under floor air supply to the fireplace must be completely sealed off

Before installing the fire a simple smoke test should be carried out on the flue to check its condition. Light a smoke

Generator, hold it at the top of the fireplace opening and observe that the smoke is being drawn up the flue, if so,

proceed with installation. If not, pre heat the Flues for a few minutes and recheck, if smoke still fails to be drawn up the flue, further Investigation is required and the appliance **MUST NOT BE FITTED**.

**Minimum diameter circular flues 125 mm**

**Minimum effective height of all class 1 (175mm) flues 3 metres**

**Minimum effective height of all class 2 (125mm) flues 4 metres**

WARNING PASSING A SMOKE TEST IS NOT AN INDICATION THE APPLIANCE HAS PASSED A SPILLAGE TEST

## **BOTH TESTS ARE A SEPARATE PROCEDURE**

#### 4:2

**Purpose Made Builders Opening With a Conventional Stone Flue.**

**With a minimum cross sectional dimension of 175mm (7") and minimum effective height of 3 metres.**

**The base of the builders opening must be a non-combustible material and at least 12mm thick. The Builders Opening must be at least 300mm off the floor for a wall mounted fire installation.**

**It is recommended that a qualified builder construct the builder's enclosure.**

**A lintel should be used to support the chimney breast above the Builders opening.**

**Any gaps around the Builders Opening, as may be the case with a dry liner wall must be sealed.**

#### 4:3

**Additional Requirements for a Purpose Made Builders Opening with a Flexible Flue Liner or**

**A 125mm (5") diameter flexible gas flue liner with effective height of 4 metres**

**Conforming to B.S 715, and connected to a Register Plate fitted and sealed above the Builders Opening.**

#### 4:4

**A solid flue pipe 125mm(5") diameter and metal flue box conforming to B S 715 with effective height of 4 metres**

#### 4:5

#### **SHELF POSITION**

**If the fire is to be installed into a suitable fire surround it must have a fire rating of 150C.**

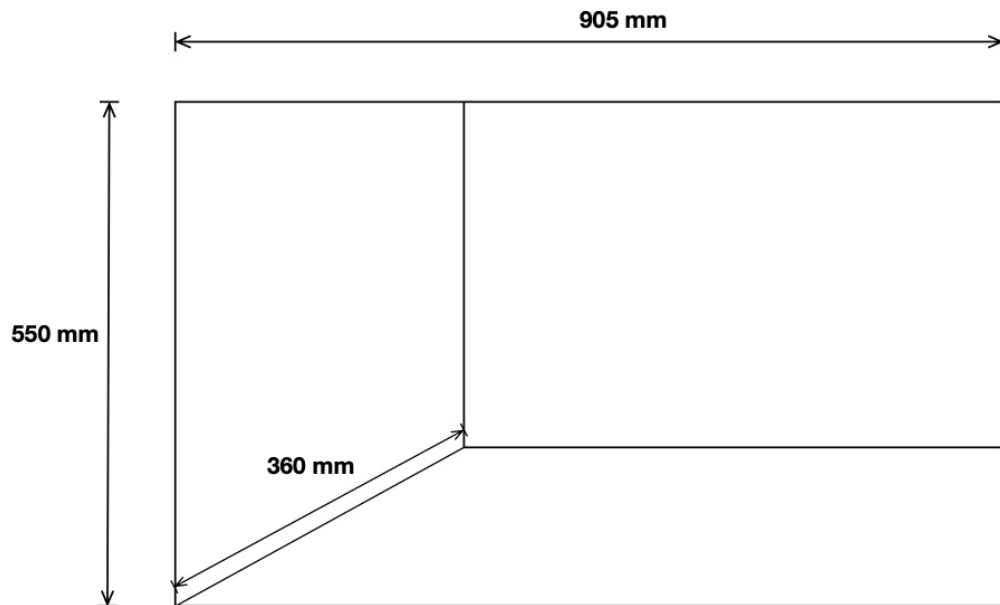
**If the fire surrounds has a combustible shelf it must be at least 300mm above the top of the fire**

**And protrude from the wall be no more than 150mm**

**For every 25mm increase in depth of combustible Shelf the position of the shelf must be raised by a further 15mm.**

# CONNELLY CURVE OPENING SIZES

5:1



ONCE THE BUILDERS OPENING HAS BEEN PREPARED AS SIZES ABOVE ,THE BASE MUST BE LEVELLED OFF AND FILLED IN COMPLETELY ,TO SEAL ALL GAPS , SEE PAGE 4 SHOWING DIAGRAM ON INSTALLATION

ALSO SEE 6:1 FOR SEALING IN APPLIANCE

5:2

**When installed into a brick built chimney, you must ensure that there is sufficient depth to accommodate any debris, which may fall from the chimney, this depth must be sufficient to accommodate 12 litres of volumetric space in a conventional brick built chimney**

5:3

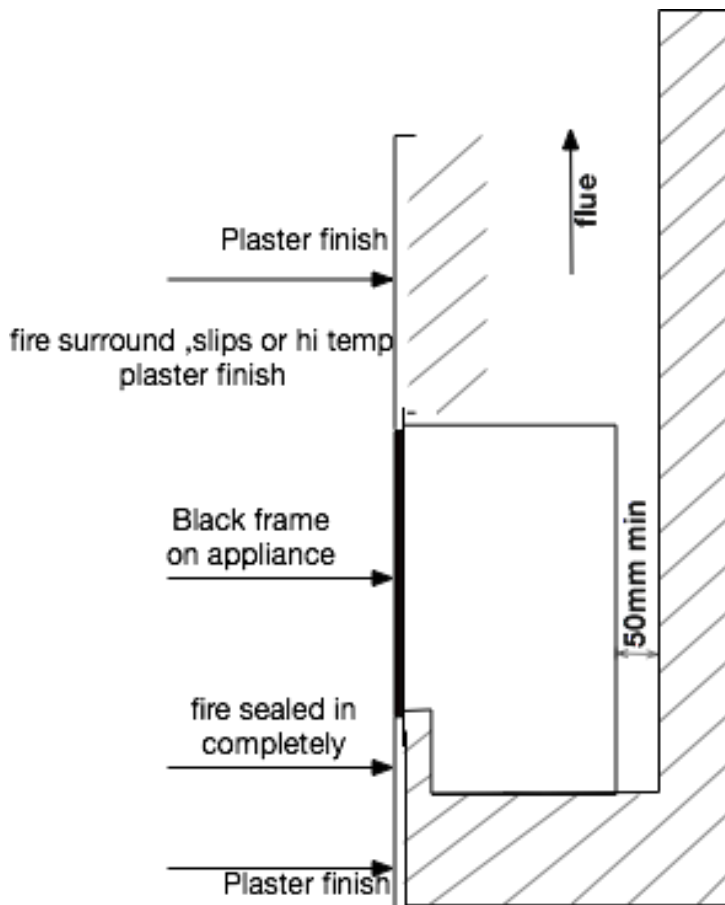
**This appliance is not suitable for use in fireplaces fitted with an existing chair brick , the chair brick must be removed**



## INSTALLING THE CONVECTOR BOX

**6:1**  
mark position in the wall for installation following the current rules in force, and form an opening to the sizes stated in section 5,

As these appliance are designed to be flush finished either up to a surround, marble or granite slips, or just heat resistant plaster finish the opening will allow the appliance to fitted into the underneath of the appliance will then have to be finished with the appliance in place, see diagram below



**6:2**  
It is important when installing the convector box that all gaps around the inside of the fireplace opening are sealed .the base both sides left and right and the rear may even need pointing in between the brickwork it is important that the flue can only pull through the flue tunnel for the appliance to clear its products and work correctly

A spillage test will deem this to be correct if a spillage test fails it will be due to the appliance not being sealed in correct

**6:3**  
With the opening being made correct the appliance can be removed from its packaging and the glass panel removed by unscrewing the 4 screws one in each corner and the glass frame can be removed

The 3 glass fixing brackets, top and left and right can be removed and taking care the glass does not fall, it can then be removed and placed somewhere safe

6:4

Once the glass panel has been removed and placed somewhere safe , the fire base can be lifted out and also put somewhere safe ,

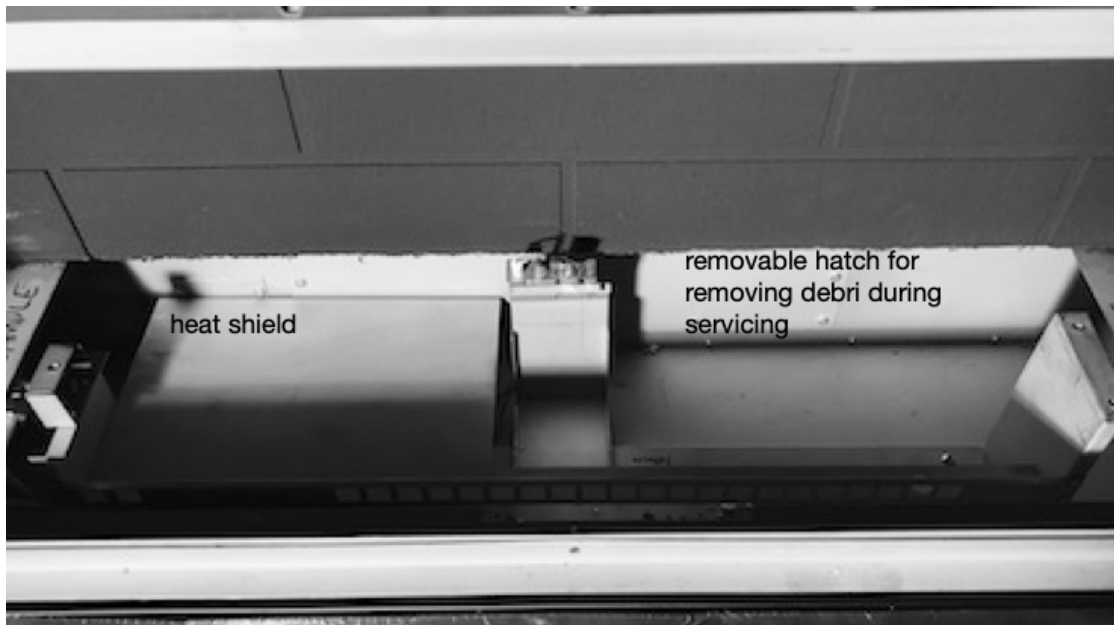
The burner can now be removed by unscrewing the 3 M5 bolts holding it in place ,

Once burner has been removed there is a gate where the gas pipe enters the bottom of the appliance this can now be opened ,

The burner tray itself can be removed if necessary by removing ,the heat shield held in place by 2 screws and then there is 4 screws holding down the fire tray , also the power lead wire and the switch panel wires would have to be removed

These must be replaced after installation

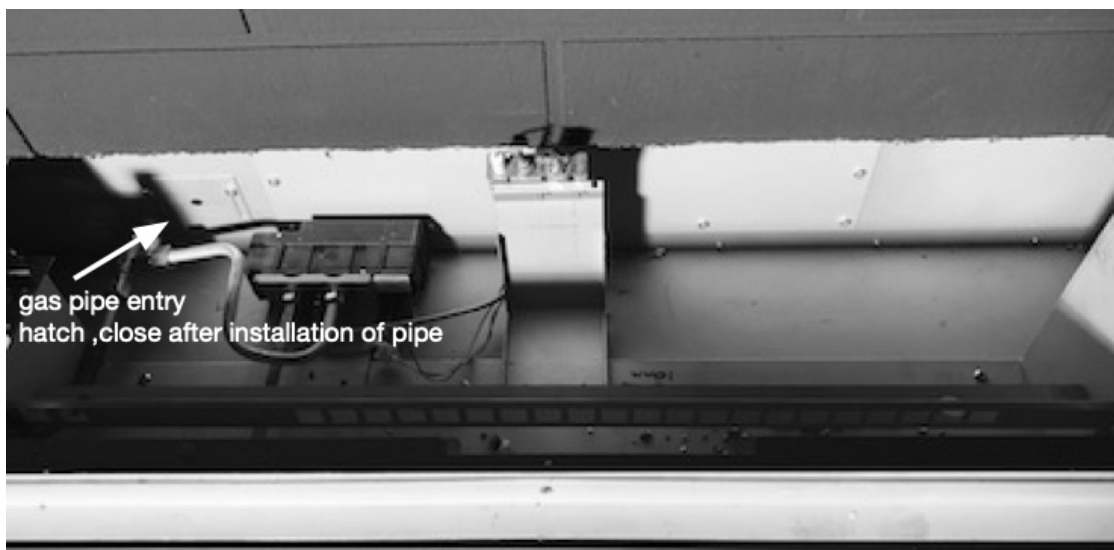
The low voltage power lead which comes with the fire is positioned outside the appliance and should be sleeved through the wall and positioned to suit the end user ,using batteries with this appliance is not an option ,



THE PILOT POSITION ON NEW MODELS IS POSITIONED AT FRONT OF BURNER

Image above showing heat shield and debris cleaning panel

Image below shoes the gas pipe entry hatch



## CONNECTING THE GAS AND TESTING

### 7.0

With the box installed and sealed in the gas pipe can be positioned, once positioned refit the fire tray connecting the off wire switch with the push on connector and the power lead

Screw the fire tray down using the 4 self tapping screws and connect the gas pipe ,ensuring the gas pipe entrance gate is closed and tightened ,

Once connected Turn on the main gas supply and carry out a gas tightness test.

**PLEASE NOTE - THE WORKING PRESSURE TEST ON THIS PRODUCT NEEDS TO BE COMPLETED BEFORE THE FUEL-BED IS FITTED.**

Connect a manometer to the pressure test point and refit the burner ,fill the burner with the mica fil and turn on the appliance to the full on position and check the gas pressure is 20 mbar's +/- 1 mbar

Once 20 mbar's is verified remove the manometer and replace the test screw

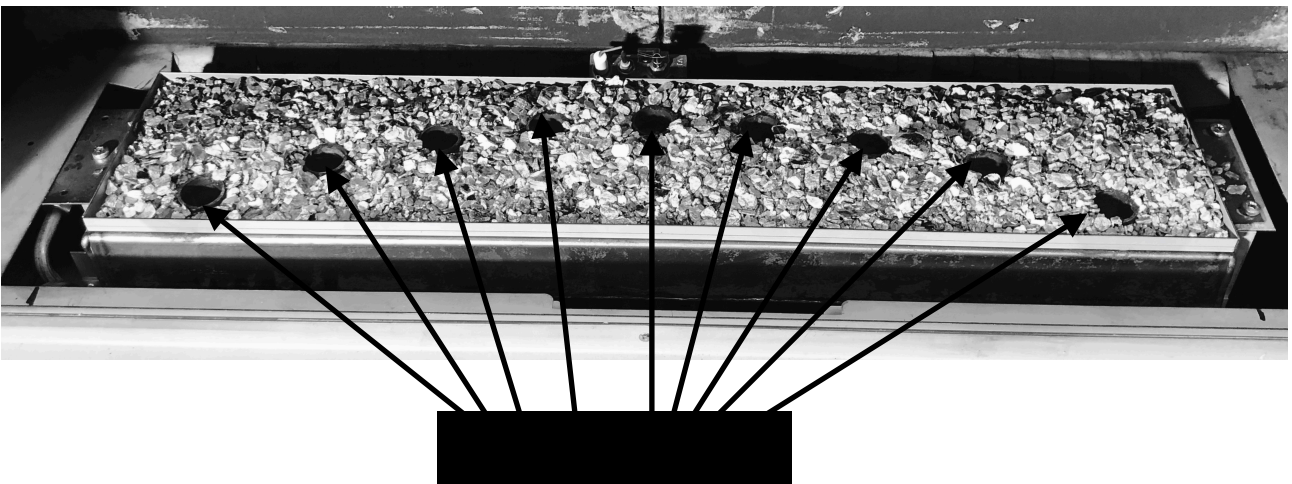
the burner plate can now be replaced and screwed in position using the 6 self tapping screws

Replace the heat shield and fit the burner by screwing in the 3 M5 bolts

### 8:0

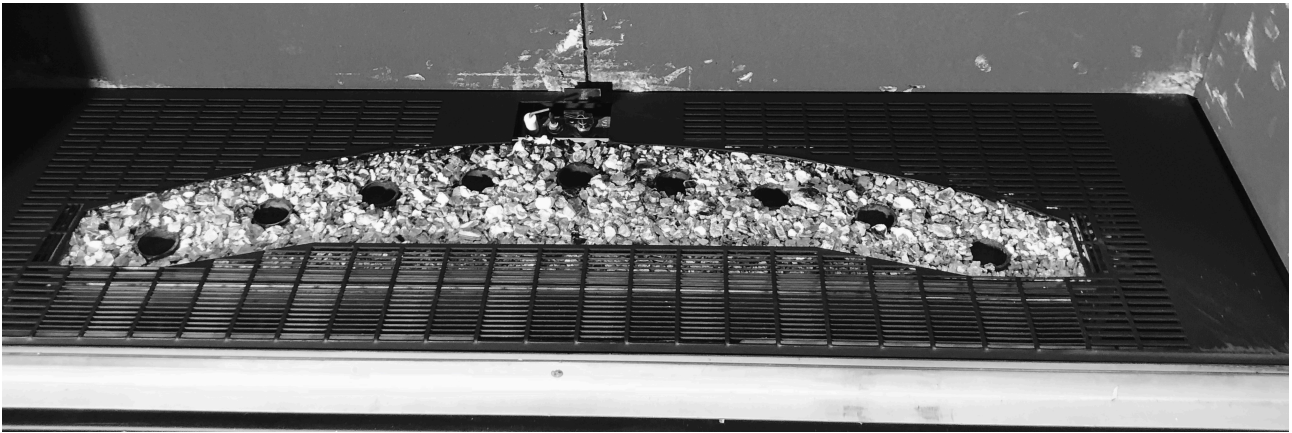
After installation and the burner is refitted ,ensure the heat shield is replaced beforehand ,if this is not replaced the gas valve may overheat and cut the appliance off

Once the appliance has been installed and is now ready to be commissioned , the gas burner can be filled up completely with micafil ensuring it is filled with the correct amount to fill to top of burner  
Always being careful not too much is spilt down the aeration holes in the burner



Above the gas burner filled to the brim with the aeration holes left clear

Once the burner is filled with the micafil ,the base can be placed into position see image below



The fire base is placed into position ensuring the pilot is not fouled ,the base pushes down into place ,it is a tight fit and if need be push back towards fibre back to get it in place



Once the base is fitted into place and is pushed down firm ,

The curved glass panel can be slid into place slide in from right or left ensuring no pressure put on painted base surface as it may scratch the paint ,  
Push it fully around and ensure it goes behind the bracket at the rear of the pilot light ,

**THE PILOT POSITION ON NEW MODELS IS POSITIONED  
AT FRONT OF BURNER**

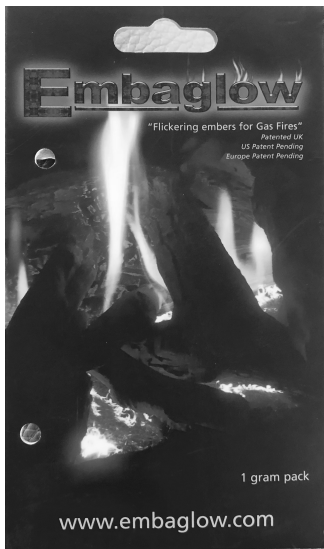


The curved glass back fitted behind the bracket behind the pilot

Once the glass is positioned centrally and behind the bracket ,

The glowing embers can be placed , they have to be made into small strands and placed along the burner where the gas comes out

Once placed turn the appliance on and check they have been placed correctly , they will glow when in the flames ensure an even amount is fitted to suit the appearance



The ember glow comes in a small packet as shown to left  
Follow the instructions on the packet

It is important to keep it into small strands

This appliance is not supplied with any fuel pieces as logs coals etc but it may have small glass pieces or stones to be placed around the front grill to enhance the look

**Under no circumstance must anything be placed on the burner or near the flames**

**DO NOT COVER THE AERATION HOLES  
WITH THE EMBERS IT WILL EFFECT  
FLAME PICTURE**

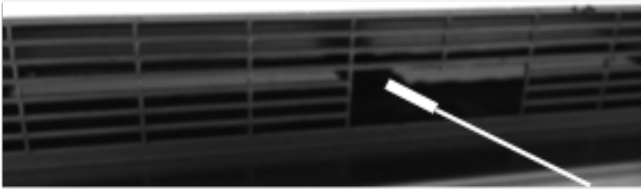
**THE PILOT POSITION ON NEW MODELS IS POSITIONED AT  
FRONT OF BURNER**

## 8.1

After installing the EMBERS the glass panel can be refitted by placing the glass panel in place and refitting the 3 brackets for holding the glass and screwing them in place, The glass doorframe can now be refitted using the four screws

The fire can now be turned on and a spillage test performed

check for spillage



Close all doors and windows.  
with the fire operating at high for 5 minutes  
Insert a smoke match into the grill 25mm in central  
to the flue outlets as shown above  
All smoke should be drawn into the Diverter, if not  
wait a further 10minutes and repeat the test.  
If there are any Extraction Fans in the room or  
adjoining rooms set them at maximum and with  
the door to this room open repeat the above  
test. If spillage still occurs Seek Expert  
Advise.,

### **THE APPLIANCE WILL NOT WORK UNLESS CONNECTED TO THE LOW VOLTAGE POWER SUPPLY**

If spillage persists, the flue is not functioning correctly and a fault exists. If after investigation the fault cannot be traced and rectified, the fire must be disconnected from the gas supply and expert advice obtained.

### **IMPORTANT: IF THE BURNER IS EXTINGUISHED FOR ANY REASON YOU MUST ENSURE THAT YOU WAIT A FULL FIVE MINUTES BEFORE ATTEMPTING TO RE-LIGHT THE FIRE**

At the time of commissioning the appliance ,complete all relevant sections of the benchmark checklist on the inside back pages of this document

Crystal fires ltd is a licensed member of the benchmark scheme which aims to improve the standards of installation and commissioning of domestic heating and hot water systems in the uk and to encourage regular servicing to optimise safety , efficiency and performance .

Benchmark is managed and promoted by the heating and hot water industry council, for more information visit [www.centralheating.co.uk](http://www.centralheating.co.uk)

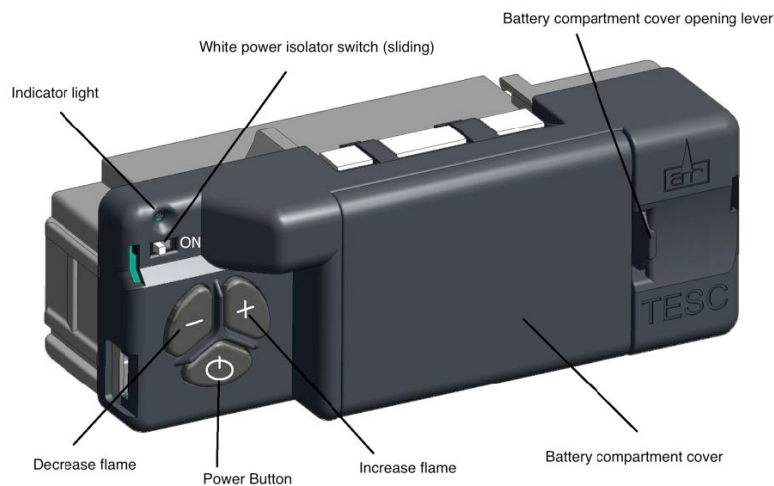
## LIGHTING THE APPLIANCE (USERS INSTRUCTIONS)

9:1

### Fire Control

This control is situated on your fire. The drawing shows the main features of the control.

With this appliance this valve will sit beneath the fire and the handset or switch panel will be used to operate



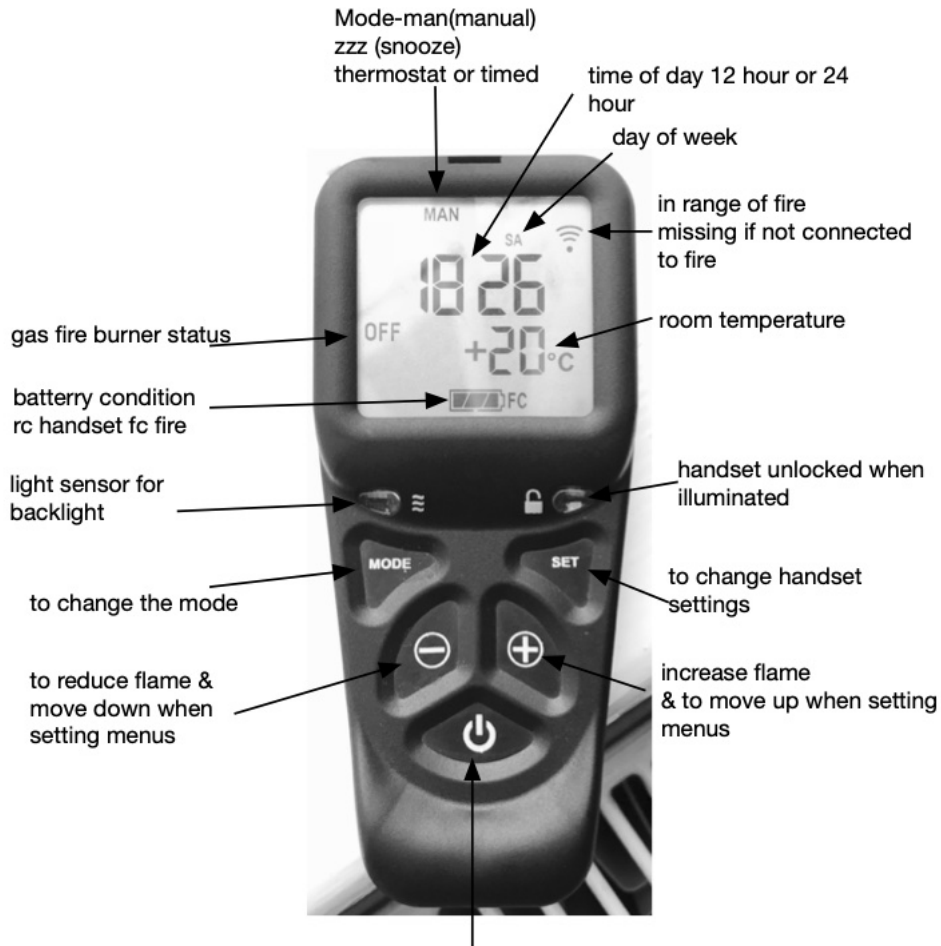
This appliance is fully remote control so the handset must be used also the permanent low voltage power supply has to be connected at all times when using

The handset will show a wifi logo in the top right of the handset when connected

## Handset

Ensure the power isolator switch on the front corner of Fire Control is in the on position I.NOTE: For safety reasons a button must be pressed and released for the command to be recognised. Keeping hold of a button when pressing (unless other wise instructed) will not be recognised as a command press.

Grasp around the handset to unlock its functions. The green unlock light will illuminate to show when the handset is unlocked and ready to accept commands. (N.B. Keep a grip of handset to keep it unlocked, to continue to operate the command buttons.)



**Power button** – To start the fire, (after following the instructions of the previous page), with one hand grasp around the rear of both sides of the button area control. The green unlock light will illuminate. Keep the handset held to keep the control unlocked, to enable operation of the buttons. Then with the other hand touch and hold a finger on the power button for about 3 seconds. (A short beep and a flash of the unlock light will happen upon touching.) When the word “pilot” appears at the bottom left hand corner of the display, immediately release the power button. (A second flash of the unlock light and a longer beep will also sound at the time to release the power button). The Fire should be lit within a few seconds. ( N.B. If power button is held for more than a few seconds after second flash/beep/word pilot appears, the command is ignored for safety reasons. Similarly if it is released too soon before the word pilot appears, the command is also ignored. With this system, the control has been designed to ensure that only intended ignition of the fire occurs.)To stop – with handset held to unlock it, press then release power button.



Operating instruction (detailed)

Upon successful insertion of the batteries in the Handset the display will be as shown. **The handset will be supplied paired to the fire** and all that is required is to set the time of day and select if a 24h hour clock or 12 hour clock display is required and if temperature display is on Celsius or Fahrenheit.



### **Setting the time**

Holding the handset as described previously to unlock the keypad, press and hold “SET” for a few seconds and the display will be as shown

### **Setting the display for 12 or 24 Hour display**

As always when pressing the remote control buttons keep the control held to keep the green light on and therefore handset safety feature, unlocked. The H indicates that it is time to set the timer to either 24 hour display or 12 Hour (AM or PM ) display. Press the + or – button on the handset to toggle between the two settings. When you are ready to confirm the setting you want press the “SET” button to progress to setting the day of the week.



## Setting the day of the week

Press and release the + and – buttons until the correct day of the week is shown on the display.

(Mo = Monday, Tu= Tuesday, We=Wednesday, Th=Thursday, Fr=Friday, Sa= Saturday and Su=Sunday).

Press “SET” to accept the day of the week and to progress to setting the Hour of the day.

Note: Whilst doing this setup pressing “SET” advances to the next display and pressing “MODE” will return you to the previous display setting.



## Setting the Hour

Press and release the + or – button to change the hour to the correct hour and press set to store and to move to setting the minute.

Repeat this for setting the minutes.

## Setting the temperature display to Celsius or Fahrenheit.

Press and release the + or - button to toggle between C and F .

When the display shows the desired symbol, press and release the “SET” button to store.

As the important settings above have now been done. Press and hold (not releasing straight away) the “SET” button for a few seconds and this will exit the setup menu.(alternatively you can press and release the set button several more times until the time of day is displayed on the handset



The control is now ready for use with the Fire Control.

Note: the legend at the bottom shows the battery condition of both the batteries in the hand set and in the fire control alternately. RC = Remote Control handset and FC = Fire control. The control is designed to get the most out of the batteries but when eventually the display shows they are spent (when the battery legend is a empty area, we recommend you change the batteries in the handset before they are flat, to avoid having to re-program the time of day in again. N.B. Pairing is not lost, even if the batteries are removed or flat. The pairing is not lost when the batteries are flat but replacing them quickly before they have gone flat will avoid having to set the time of day, day of the week etc again)

### **Paging the handset**

If you have misplaced the handset (and it is in range of the fire), you can page it by pressing the + button only on the fire control for around 5 seconds. The handset will flash and make a noise to help you to locate it. Once you pick up the TESC it knows you hold it and so the sound stops. The flashing and sound will last for 60 seconds each time the handset is paged as described. If not found in 60 seconds, page again and so on. NOTE: PRESS "+" Button ONLY , NOT "+" and "-' Together as you will accidentally break the handset pairing and have to reset handset to factory state and pair again ( see other parts of the booklet if this happens).

### **Advanced settings Menu**

In the event that you may want to change the other preset settings of the control features. Do not do a long press and hold above but a normal short press and release will take you into the advanced settings area.

Advanced settings options are:-

- Back light –
  - A = Automatic (default setting). The back light comes on in the dark but not in the light.
  - 0 = Light never comes on.
  - 1 = Light comes on when ever handset is unlocked.
- Display contrast – 8 levels from 0 to 7 (default level 4) .
- P = pairing with other devices other than the fire control. The hand set can pair with other modules to :-
  - L= Operate an electric light – which is the dimmable in 9 steps
  - F= operate an electric fan –which can have 9 speed levels
  - A= operate an auxiliary contact to operate another device.

### **Other Modes than Manual mode**

Depending upon the model of Fire your handset maybe enabled to have some automatic features, namely, Thermostat mode, timed thermostat mode and snooze mode. Snooze mode can be selected to work with in conjunction with either manual or thermostatic modes.

You can switch between modes at any time with the handset unlocked by pressing and releasing mode button to toggle between modes.

Note: If at any time the power button is pressed during operation, this will stop the fire and exit any automatic mode and return the handset to manual (MAN) operation mode.

Snooze mode in manual operation

Snooze mode is a time period you can set which will turn off the fire after a certain time period has elapsed.

The snooze time period can be set before or during manual operation of the fire. Hold the handset to unlock as described previously and press the mode button as many times as necessary until the word MAN and the Zzz symbols are flashing at the top of the display. Press and release the set button and this will put the control into Manual snooze mode.

The default time period for the snooze time period is 1:00 hour. Pressing the set button again will show you the snooze time period remaining. This can be adjusted by pressing the “+” or “-“ buttons. The timer period that can be set is from 1 minute to 24:00 hours.

After adjusting the time, press set again to enter the time setting required (or if left for a few seconds this time is now stored and used).

Once this countdown timer has reached zero the fire will turn off (as if you had pressed off manually, it does not recycle).

Snooze mode in Thermostatic mode

The same thing as above can be done before or during a thermostatic mode operation (see below).

Thermostatic mode for closed fires

The handset has within it a thermostat sensor and this can be set so the fire will heat the room to match the temperature set in the handset.

There are 3 temperature types that can be set:-

-Day mode temperature that has a sun symbol on the display – the default temperature is 24 C

- Night temperature that has a half moon symbol on the display- the default temperature setting is 18 C

-frost protection that has a snowflake symbol on the display – the default temperature setting is 5C

Hold handset and press and release the mode button several times as necessary until the display has a thermometer symbol flashing at the top of the display. Press the set button to enter this mode.

Press the set button again to see the temperature setting that is set and the mode (the default is 24 C ) and on the left of the display is a sun symbol showing it's the day temperature.

If a different set temperature is required, while the display is showing this set temperature , press the + and – buttons to alter the setting. When finished either press set or leave and after a few seconds the new setting will be accepted and the display will return to the time of day screen.

On the anniversary of the set temperature of the clock, the set temperature will be compared to the actual temperature displayed on the handset(i.e. the room ambient temperature around the handset). If the room temperature is higher than the set temperature the fire will not light until the room has cooled to below the set temperature. The fire would then automatically turn itself on when the room is cooler than the set temperature and down and off if necessary when it is hotter than the set temperature.

(Note- when the set temperature is reached while the fire is in operation, the fire reduces the burner power level each minute until the burner is off. The pilot (if fitted) will remain on for a further 30 minutes and if the set temperature is still too high , the pilot will then also extinguish. When the set temperature is higher than the actual temperature , the fire will automatically light and go to the full burner rate to reheat the room back to the set temperature.

Note: If at any time the power button is operated during Thermostat mode, the control will cancel any thermostat operation and return the control to manual mode

For ease of setting there are two other modes that can be selected as stated above. Night mode (moon symbol) and frost protection setting (a snow flake). These can be selected (and adjusted if necessary) by pressing set then mode while in thermostat mode. Pressing mode button toggles through from day to frost modes. The purpose of these settings is to help your fire to automatically protect you home against becoming too cold if there is a sudden change in the weather. The control must be left in the appropriate mode for this to function.

Note: As stated in an earlier section, snooze function can also be operated in conjunction with thermostat mode. The thermostat symbol and the Zzz symbol will be on together when in this mode.

#### Thermostat mode for open fires

This is the same as for closed fires except that :-

The fire will not ignite automatically and it will only regulate between minimum and maximum burner setting. The fire is lit manually by the remote control and then you enter thermostat mode as described above and set the temperature. When no longer requiring thermostat mode. Turn off the burner as described above and the handset returns to manual mode.

#### Timed thermostat mode( Closed fires Only)

This mode enables the various day, night and frost thermostat modes to be set on a program timer. The control will work as a thermostat switching between the day, night and frost temperature settings in line with the program set.

The set up of the timer will be shown by a demonstration.

To set up the timed thermostat to be at 24 C from 06:00 to 09:00 then drop to 18 C from 09:00 to 15:30 and then 24 C again from 15:30 until 23:30 and then to protect from frost a 5 C setting between 23:30 to 06:30 the next day from Monday to Friday this is what you would do:-

Hold handset to unlock – press set and hold until a beep and release. Press MODE button until the timer symbol is flashing on the top of the display – press set to enter the time mode – Mo is flashing so it is already set for Monday- press SET and release now press the + and – buttons to make the time of day read 06:00( note the steps are in 15 minutes steps) – press SET and release- press + and – to make the next symbol show a flashing sun symbol- press and release SET- as Mo is flashing press and release SET again enter the next time of 09:00- press and release SET- change the flashing sun symbol to a flashing moon symbol by pressing and releasing the + and – buttons then press and release SET again to store the moon setting (18 c)- continue this until you have entered each time and temperature change required for each day.

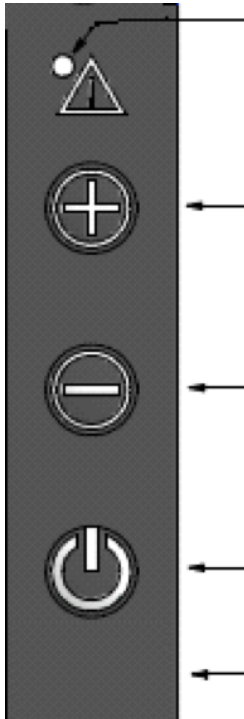
To put the fire into thermostat timer mode press and release the mod button until the thermostat and timer symbols are displayed on the display at the top. Press and release the “SET” button and the control will now run the timed program set up in the memory.

To adjust any time setting in the memory re enter the timer program setup mode (by pressing SET and then MODE as described above). Then press set to make the time flash. Now holding the + button advances the display to the next setting and so on throughout the program. Amend the appropriate setting and when finished do a long press of the SET button to exit the program mode.

To rest the whole timer program in the memory:-

Hold handset- press set- press mode until SETUP is flashing- press SET to enter SETUP- press SET about 8 times until CP0 is flashing on the display- use the + and – buttons to change the display to CP1 – press SET – press SET again and the display will return to standby Manual mode and the timer setting have been completely removed for the timer memory.

## Switch panel



The curve has a switch panel mainly for emergency if the handset was to fail ,it is positioned on the right of the fire below the glass panel

### Starting the fire

Press and hold the power button continuously until the red light illuminates next to the triangle symbol (this takes typically 1 second). As the red light illuminates release immediately the power button. The red light will then flash as the burner is being lit. While the burner is lighting the red light will flash. When the burner has lit the red light will stop completely. The burner will be at maximum burner rate when first lit.

Note: If the power button is pressed for too long or too short a time this is taken as an accidental press and the fire will not ignite for extra safety reasons. It is to try an ensure that the starting operation of the fire will be most unlikely to be done other than intentionally by an adult. If not done correctly , wait a few seconds and try again.

### Burner regulation

When the burner is in operation, press and release the + and – buttons to regulate the flame of the burner. Pressing and releasing the button will move the burner one step at a time. Pressing the button continuously will move the burner rate to the maximum full when pressing + or minimum burner power if pressing -.

### Stopping the burner

Press and then release the power button once. The burner will stop and the red indicator light will illuminate momentarily to show the fire is turning off.

## INSTRUCT THE USER

### 10.0

Instruct the user on the safe operation of the appliance.

Demonstrate how to operate the Remote Control System.

Explain the function of the ODS as described earlier.

Any cleaning procedures should only be undertaken with the appliance cold.

Show the Customer how to gain access to the Glass Door for cleaning on the Outside and how to gain access to the Inside for cleaning.

Advise the customer that the fire must never be used with the Door Open or if the Glass Panel is found to be cracked Chipped or damaged.

Hand all the Instructions to the user for safekeeping and future reference.

Advise the Customer that the Batteries in the Remote Control Hand Set and Receiver must be replaced When the appliance is serviced

Advise the customer that the flue and fire should be serviced Annually for continued safe operation

Certain wall coverings like blown vinyl should not be used on the wall above the fire

## MAINTENANCE

### 11:1

Any cleaning should be carried out when the appliance is cold the fire will retain heat for some time after it has been switched off

### 11:2

If any fuel pieces is seen to be broken or damaged replacements must be obtained from the supplier

If soot is seen to be building up on the fuel pieces it is indicating that the fire requires servicing

### 11:3

Due to the nature of the convection air flowing over the fire, The walls of the room directly and around and above the fire may become discoloured slightly

### 11:4

CERTAIN WALL COVERINGS LIKE BLOWN VINYL SHOULD NOT BE USED ON THE WALL AROUND THE FIRE



Again ensure the fire and glass panel are cold before proceeding.

Like all glass windows the glass will become dirty and require cleaning.

The glass door can be cleaned on both the outside and inside with a damp cloth, allowed to dry then wiped with a Dry cloth to remove smears. To do this Remove the 2 screws at the top and bottom Left and top and bottom right Hand side and remove, the glass will pull forward at the bottom and pull out of the channel at the top, replace in reverse order

Important.

After cleaning it is important that the Glass Door is sealed closed with the fixing screws.

If the Glass Door Panel is found to be Cracked, Chipped or Damaged the Fire Must Not Be used until it has been replaced

**Important do not disturb the fuel pieces**

For spares and service contact your local supplier or installer stating the model and serial number

Regular service and inspection should be undertaken to ensure continued safe operation, it is recommended that your fire and flue should be checked and serviced annually by a competent person for continued safe operation

## SERVICING

12:0

### **GENERAL CHECKS PRIOR TO ANY SERVICING**

**A COMPETENT PERSON WITH A CURRENT GAS SAFE APPROVAL MUST SERVICE THE APPLIANCE EVERY YEAR**

**A GAS SOUNDNESS TEST BE CARRIED OUT PRIOR TO SERVICING**

**IT IS ALSO RECOMMENDED THAT THE OPERATION OF THE APPLIANCE CHECKED PRIOR TO ANY SERVICING, AFTER THESE CHECKS ENSURE THE APPLIANCE IS COLD BEFORE ANY SERVICING BEGINS**

12:1

General servicing

It is recommended that the ods and mica fil & glowing embers are replaced during any servicing, please ensure they have been purchased before servicing begins

Lay a dust-sheet in front of the fire

Remove 4 screws holding glass frame

Pull glass away at bottom corners and remove glass panel, inspect for damage and store in a safe place

Remove glowing embers and replace check for any soot clean as necessary

With the burner removed the inspection cover on the rear of the fire can be unscrewed and any debris that have accumulated can be removed, refit the panel ensuring a good fit and it is sealed

Vacuum the inside of the firebox before replacing the fire tray

Replace burner and the screws holding it down

Replace top burner cover and fuel using the instructions

Replace the glass panel and screw up the glass fixing frame

Check any faults have been corrected and re-commission the fire conducting the usual safety checks specifically gas soundness checks and spillage

Checking the gas rate and pressure would ensure the appliance has not changed since installation

## **WARNING**

**This appliance is a heating appliance and as with all heating appliances a fireguard should be used for the protection of children, the elderly and infirm. Fireguards should conform to B.S. 8423 : 2002 (Fireguards for use with gas heating appliances).**

PART	PART NUMBER
HANDSET WITH DISPLAY	CONNELLY 01
ODS	CONNELLY02
INJECTOR 500	CONNELLY03
GLASS PANEL AND SEAL	CONNELLY04
TESC GAS VALVE	CONNELLY05
Erta ods 82 330	CONNELLY06
Mica fil curve	CONNELLY07
Curved glass	CONNELLY08

## TERMS & CONDITIONS

### THE APPLIANCE MUST HAVE A GAS NOTIFICATION

AS OF 01/03/2016 BENCHMARK FORM MUST BE FILLED IN COMPLETELY AT TIME OF INSTALLATION

Two Year Parts & Labour Guarantee.

Crystal Fires Ltd guarantees your fire for two years against defective manufacturing and material, including parts and labour, subject to the following terms and conditions.

Further Three Year Parts Only Guarantee.

Your Crystal Fire is covered for a further three years for parts only against defective manufacturing and materials, subject to the following terms and conditions.

1. This guarantee applies to gas fires only. Electrical appliances are not included.
2. Installation must be carried out by a qualified Gas Safe Registered engineer, in accordance with the supplied instructions and a gas safety certificate must be issued by the installer. The product must be operated in accordance with the supplied instructions.
3. The enclosed guarantee registration form must be fully and correctly completed and returned to Crystal Fires within 14 days of the installation.
4. The fire must be serviced annually by a Gas Safe Registered engineer and a gas safety certificate must be issued by the engineer, irrespective of the amount of use of the appliance. The service must include replacement of the oxy-pilot assembly.
5. The appliance must be kept free from dust, dirt and debris by the user, in accordance with the cleaning instructions.
6. This guarantee is non-transferable and is made to the original owner provided that the purchase was made through an approved Crystal Fires stockist.
7. This guarantee is limited to the repair or replacement of parts found to be defective in material or workmanship after confirmation of the defect by a Crystal Fires engineer, provided that such parts have been subjected to normal conditions of use.
8. Any installation, labour, transportation or any other related costs or expenses arising from defective parts, repair or otherwise of same, are not covered by the guarantee, nor shall Crystal Fires assume responsibility for them. Furthermore, Crystal Fires will not be responsible for any incidental, indirect or consequential damages, except as provided by law.
9. All other guarantees – expressed or implied – with respect to the product, its components and accessories or any obligations or liabilities on the part of Crystal Fires are hereby expressly excluded.
10. Crystal Fires neither assumes nor authorises any third party to assume on its behalf, any other liabilities with respect to the sale of this Crystal Fire appliance.
11. This guarantee does not apply to any other product not manufactured by Crystal Fires, such as prefabricated flue boxes and flues.
12. Crystal Fires will not be responsible for:-
  1. Down drafts or spillage caused by environmental conditions such as nearby trees, buildings, rooftops, hills or mountains.
  2. Inadequate ventilation or negative air pressure caused by mechanical systems such as extraction fans, cooker extraction hoods, clothes dryers etc.
13. This guarantee is void if:-
  1. The appliance has been operated in atmospheres contaminated by chlorine, fluorine or other damaging chemicals.
  2. The appliance is subjected to prolonged periods of dampness or condensation.
  3. Any damage to the combustion chamber, heat exchanger or other components due to water or weather damage which is the result of, but not limited to, improper chimney/venting insulation.
  4. Any alteration, wilful abuse, accident or misuse of the product.
14. This guarantee does not apply to:-
  1. Parts that need to be replaced on a routine basis e.g. coals.
  2. Cosmetic blemishes to polished metal and painted surfaces.
  3. Surface crazing to fibre liners.
  4. remote control handsets, switch panels or receivers or discolouring or marking on glass

# Benchmark Commissioning and Servicing Section

It is a requirement that the gas fire is installed and commissioned to the manufacturers instructions and the data fields on the commissioning checklist completed in full.

To instigate the guarantee the gas fire needs to be registered with the manufacturer within one month of the installation.

To maintain the guarantee it is essential that the gas fire is serviced annually by a Gas Safe registered engineer. The service details should be recorded on the Benchmark Service Interval Record and left with the householder



[www.centralheating.co.uk](http://www.centralheating.co.uk)

## GAS FIRE COMMISSIONING CHECKLIST

This Commissioning Checklist is to be completed in full by the competent person who commissioned the gas fire as a means of demonstrating compliance with the appropriate Building Regulations and then handed to the customer to keep for future reference.

Failure to install and commission according to the manufacturer's instructions and complete this Benchmark Commissioning Checklist will invalidate the warranty. This does not affect the customer's statutory rights.

Customer name:	Telephone number:	
Address:		
Gas Fire make and model:		
Gas Fire serial number:		
Commissioned by (PRINT NAME):	Gas Safe register number:	
Company name:	Telephone number:	
Company address:		
Commissioning date:		
<b>To be completed by the customer on receipt of a Building Regulations Compliance Certificate*</b>		
Building Regulations Notification Number (if applicable):		
Site Requirements	Yes	N/A
Was the chimney checked to ensure it only serves one flue/fire?		
Has the chimney been checked for obstructions?		
Has any debris at the base of the chimney been removed?		
For brick chimney installations is there enough depth for 12 litres of debris?		
Have damper and register plates been removed or locked in the open position?		
If previously used for solid fuel has the chimney been thoroughly swept?		
If the chimney is pre-cast has the inside of the flue been checked for extruded cement / sealant which must be removed?		
Has the fire place been checked for under-floor air supply which must be sealed off?		
Has the chimney been inspected prior to fitting the gas fire to ensure that it is in good condition?		
Has the structure of the chimney been checked for leakage using a smoke pellet test? (See BS5440-1 for details).		
Ventilation		
Does the installation require any additional ventilation requirements as detailed in the manufacturer's instructions?		
Hearth Requirements		
Is the hearth constructed from non-combustible material?		
Is the hearth a minimum of 13mm thick and the top surface at least 50mm above the floor?		
The hearth is a minimum of 760mm wide and has 300mm projecting from the fire opening?		
Firebox		
Have all non-used gas supply apertures been sealed (IMPORTANT OPERATION)?		
Has the fuel bed, coals, pebbles etc. been fitted to manufacturer's instructions?		
Gas Supply		
Has a pressure drop test been completed prior to breaking into the gas supply?		
Has an isolation tap/restrictor inlet elbow been fitted prior to servicing?		
Has the gas supply been thoroughly purged prior to connection to remove any debris?		
Gas tightness test completed and passed?		
Record burner gas pressure reading – if only the supply pressure is available a gas rate must be undertaken.		
Clearance Of Combustion Product		
Installation passes smoke match test?		
Installation		
Has the gas fire been installed and commissioned in accordance with manufacturer's instructions?		
The operation of the fire and controls have been demonstrated and understood by the customer?		
The manufacturer's literature, including Benchmark Checklist and Service record has been explained and left with the customer?		
Commissioning Engineer's Signature		
Customer's Signature (To confirm satisfactory demonstration and receipt of manufacturer's literature)		

\*All installations in England and Wales must be notified to be Local Authority Building Control (LABC) either directly or through a Competent Persons Scheme. A Building Regulations Compliance Certificate will then be issued to the customer.



# SERVICE RECORD

It is recommended that your heating system is serviced regularly and that the appropriate Service Interval Record is completed.

## Service Provider

Before completing the appropriate Service Record below, please ensure you have carried out the service as described in the manufacturer's instructions. Always use the manufacturer's specified spare part when replacing controls.

<b>SERVICE 01</b>	Date:
Engineer name:	
Company name:	
Telephone No:	
Gas safe register No:	
Comments:	
Signature	

<b>SERVICE 02</b>	Date:
Engineer name:	
Company name:	
Telephone No:	
Gas safe register No:	
Comments:	
Signature	

<b>SERVICE 03</b>	Date:
Engineer name:	
Company name:	
Telephone No:	
Gas safe register No:	
Comments:	
Signature	

<b>SERVICE 04</b>	Date:
Engineer name:	
Company name:	
Telephone No:	
Gas safe register No:	
Comments:	
Signature	

<b>SERVICE 05</b>	Date:
Engineer name:	
Company name:	
Telephone No:	
Gas safe register No:	
Comments:	
Signature	

<b>SERVICE 06</b>	Date:
Engineer name:	
Company name:	
Telephone No:	
Gas safe register No:	
Comments:	
Signature	

<b>SERVICE 07</b>	Date:
Engineer name:	
Company name:	
Telephone No:	
Gas safe register No:	
Comments:	
Signature	

<b>SERVICE 08</b>	Date:
Engineer name:	
Company name:	
Telephone No:	
Gas safe register No:	
Comments:	
Signature	

